



Index Center Redesign

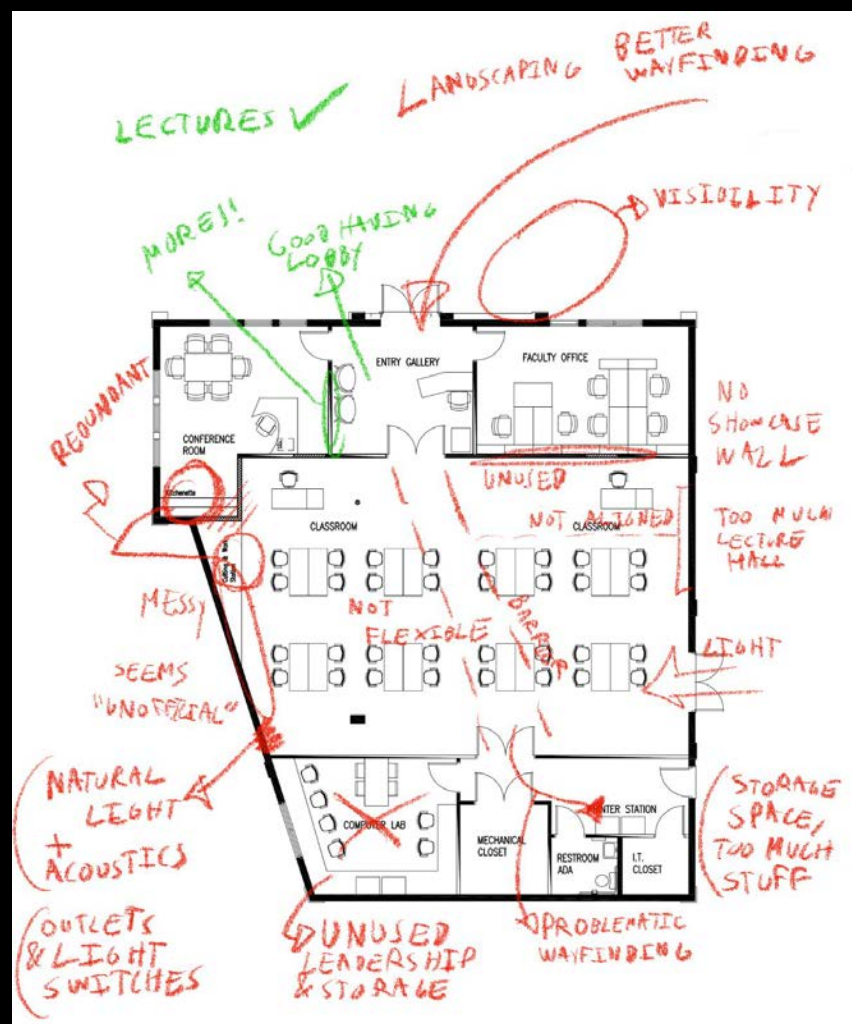
Group 1 - Brody, Juan, Brian, Tia

Contents

1. Analysis of Current Learning Spaces
2. Innovative Design Trends in Educational Environments
3. Cross-Industry Collaborative Spaces
4. Brainstorming
5. Ideation Sketches
6. Final Layout
7. Design Style Guide
8. Final Visualization



1. Analysis of **Current Learning Spaces**



Positive Examples



EDES Faculty Office

- Conference room
- Flexible lighting in conference room
- Natural lighting
- Flexible desk setup
- Multiple action areas
- Tool accessibility
- Kitchenette
- Unappealing design
- Harsh lighting in main space



2nd Floor

- Booths
- Private/group
- Lack of light
- Located in a hallway
- No space for larger groups



2nd Floor Classroom

- Flexible
- Integrating tech
- Variety of spaces
- Modern & comfortable
- Too cluttered



2. Innovative Design Trends in **Educational Environments**

MAKE SPACE

- IDEO: offices & classrooms
- Storytelling for inspiration (lobby)
- Build prototype spaces and test them
- Inexpensive ideas
- Get people moving, avoid homogeneous horizontal surfaces
- “Around the campfire”
- Many more...



Biophilic Design

- Natural / nature inspired visuals
- Natural lighting, lighting mimicking daylight
- Natural materials and colors
- Recreate natural air conditions
- Organic forms



“The more demanding the collaboration task is, the more individuals need punctuating moments of private time to think or recharge.”

Christine Congdon

Me vs We - Balancing Privacy With Collaboration

- Information control - shifting between sharing and concealing information
- Stimulation control - shifting between levels of attention, allowing for quiet and active workspaces
- Office Ecosystem - a range of flexible spaces that allow people to choose how they work



3. **Cross-Industry** Collaborative Spaces

ACADEMIC STUDY

- Flexible unspecific spaces
- Different activities
- Isolation & group
 - Single flexible workspaces
- Task controllable lighting
- MESS: Horizontal surfaces vs vertical storage
- Inspiration: domestic, airport lounge, art gallery

New Environments for Working

Andrew Laing
Francis Duffy
Denice Jaunzens
Steve Willis



The re-design of offices and environmental systems
for new ways of working

 CRC Press
Taylor & Francis Group
A TAYLOR & FRANCIS BOOK

WSJ Open Office

Samsung, Amazon, Marriott, Adobe, LinkedIn, etc.

- Encourage movement
- Nature and light
- Integrate technology for hybrid projects
- Domestic elements
- Flexibility, discourage ownership
- Comment section
- Diversification



“Diversification is a safety factor that is essential because we should be humble enough to admit we can be wrong.”

JOHN TEMPLETON

Procter & Gamble

Corporate HQ in Ohio, USA

- “It’s not about expense, it’s about looking at things differently”
- Very few ‘permanent’ items
- Designated action spaces (ie. the womb)
- ColorLESS space ColorFUL materials
- informal



4. Brainstorming

Guest Stars

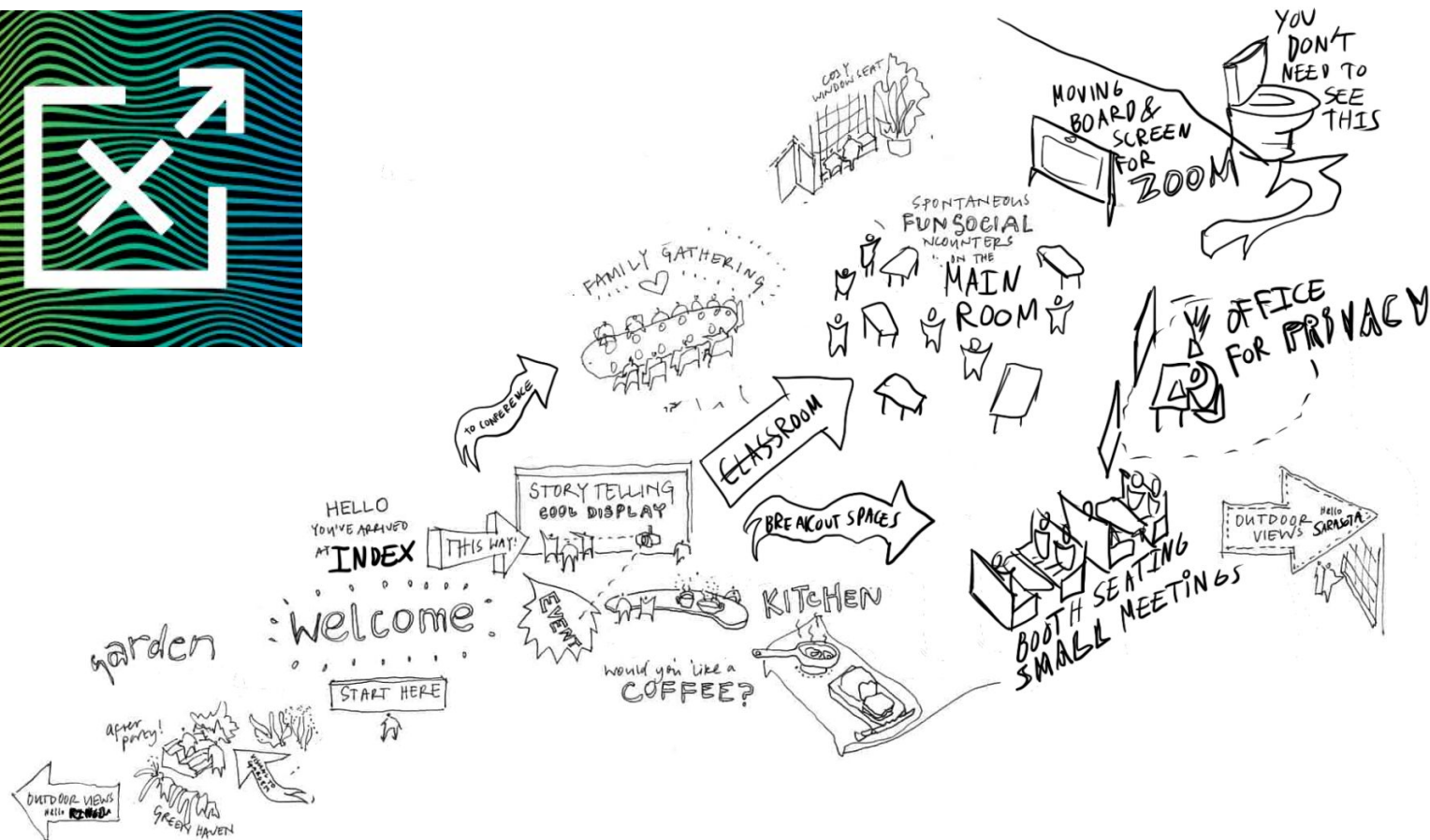
Amanda Caldera EDES
Junior

- TEA
- Spatial Planning

Jack Coleman BOAD
Sophomore

- Experience with office design
- Is always on the AC 2nd floor





Moodboard

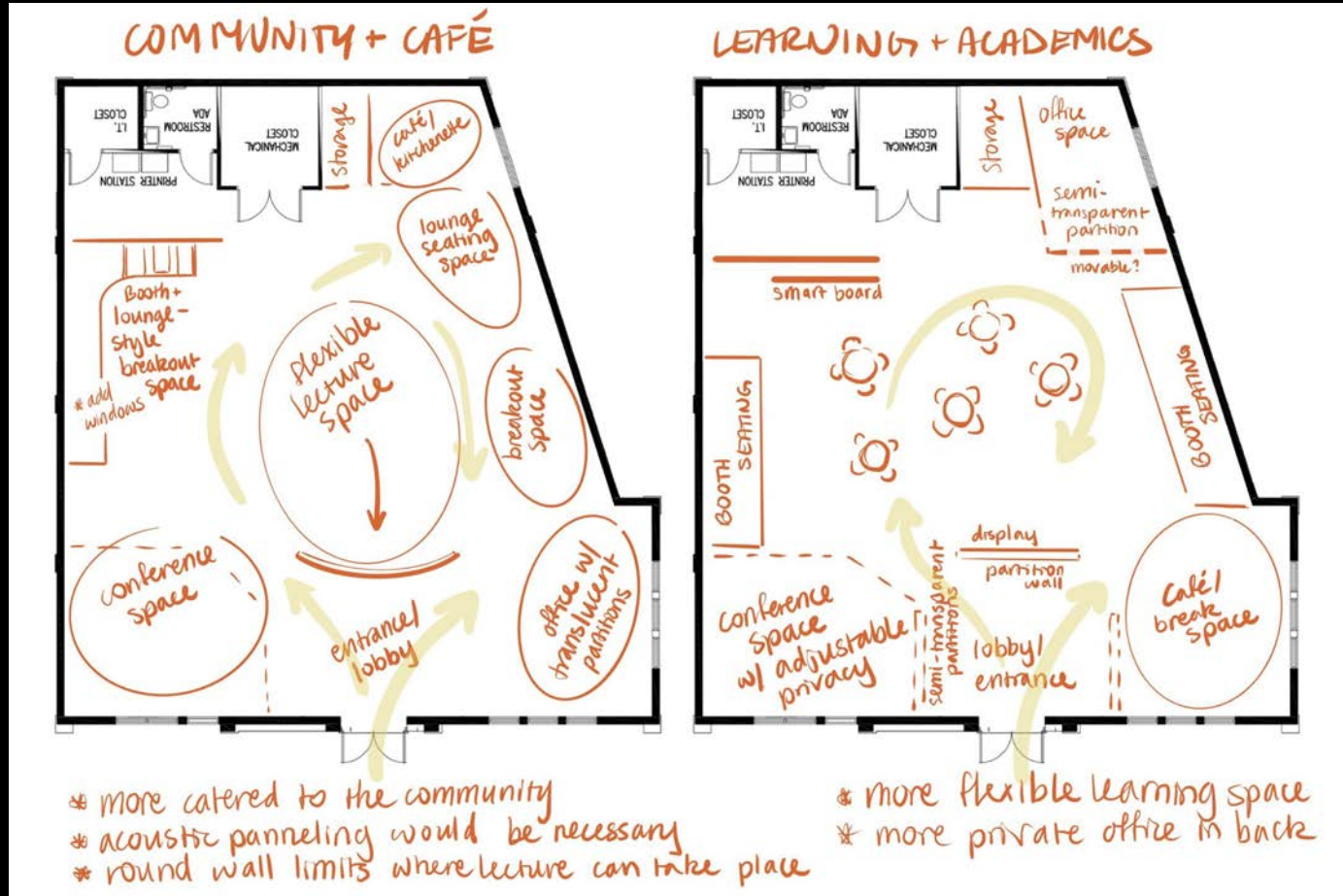




小红书

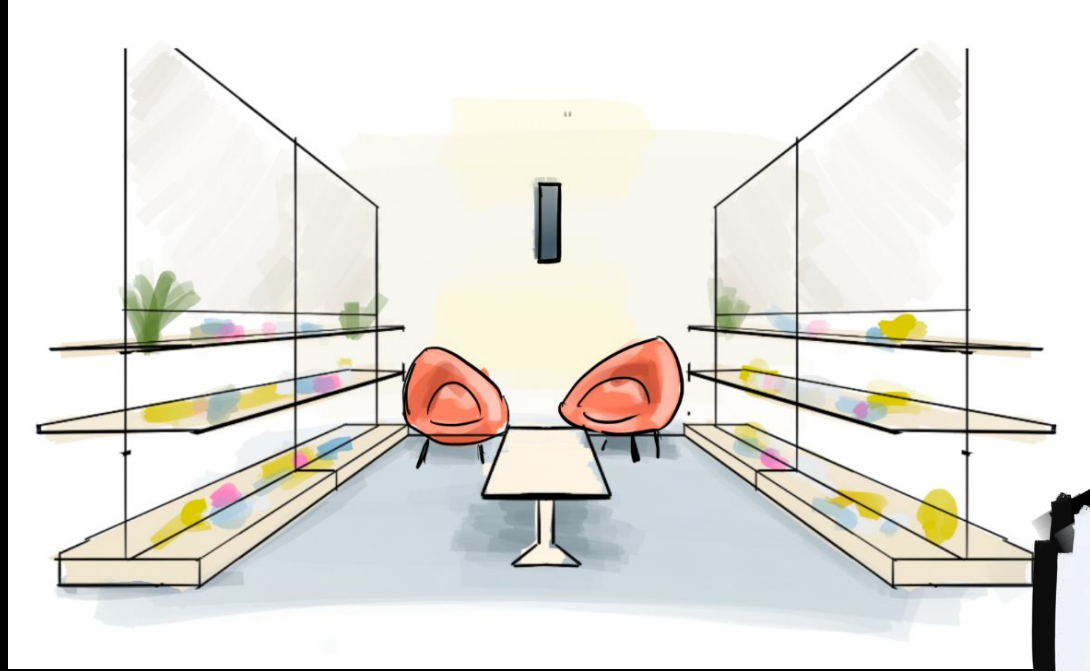
小红书号: 347913233

Floorplan Ideation



5. Ideation Sketches

East Wall Collaboratory Sketch



West Collaboratory Sketch



Office Sketches - not final





CONFERENCE RM. EAST

ACCESSIBLE SWITCHES
AT BOTH ENTRANCES FOR
BLINDS + LIGHTS

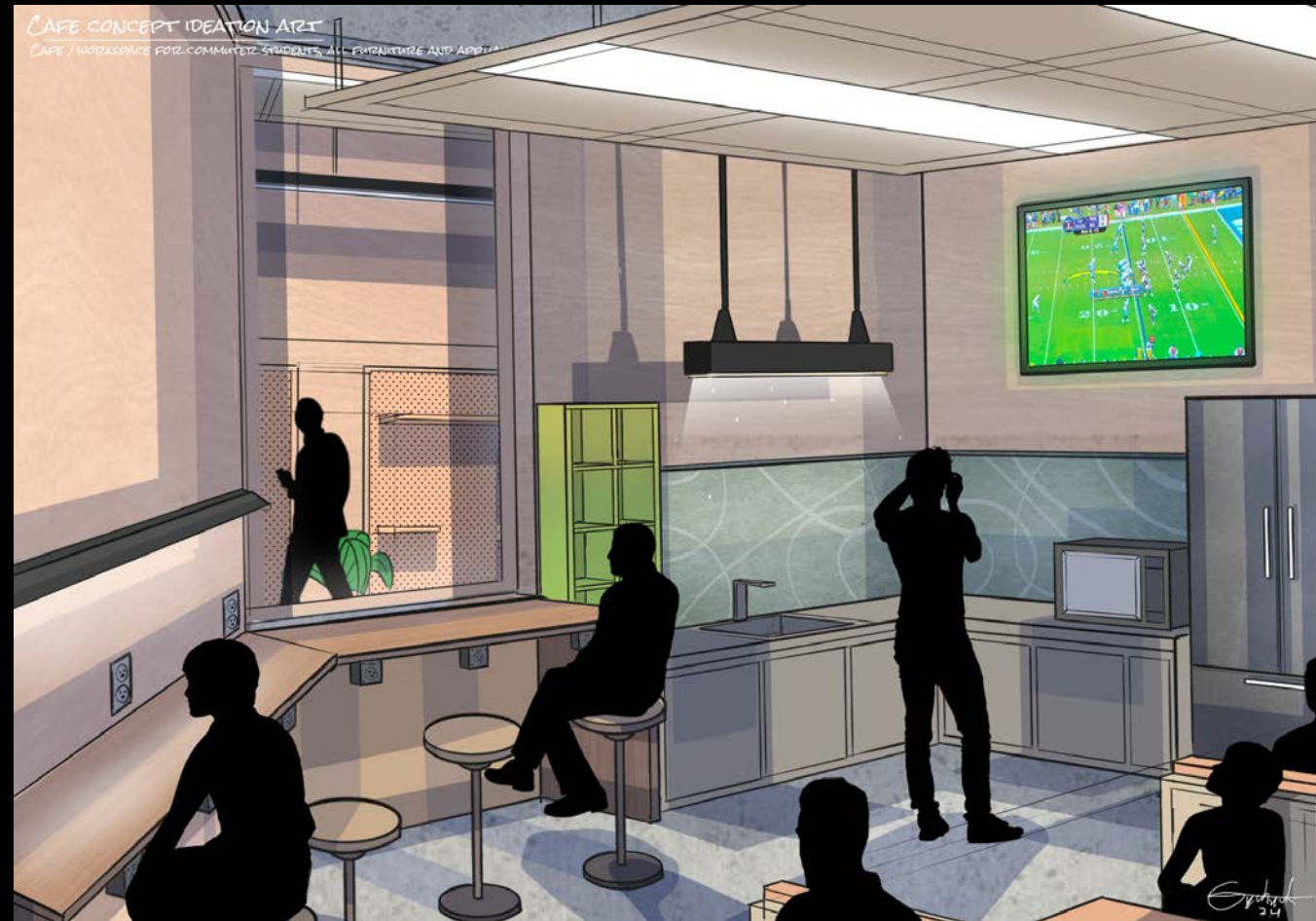
SLENDER CHAIRS
TO MAXIMIZE SEATING +
MINIMIZE VISUAL NOISE

DIFFUSED TASK
LIGHTING FOR TABLE

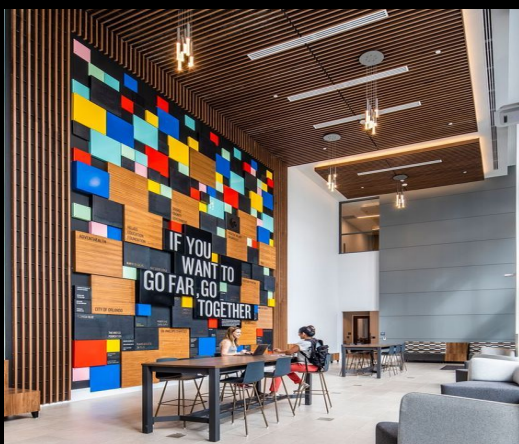
SECONDARY SURFACE / SEPARATE
TABLE FOR PRESENTATION ASSISTANCE

SMART SCREEN FOR
SPACE EFFICIENCY
+ TECHNOLOGY EASE + MAKES
WAY FOR TASK LIGHTING

Cafe Sketch

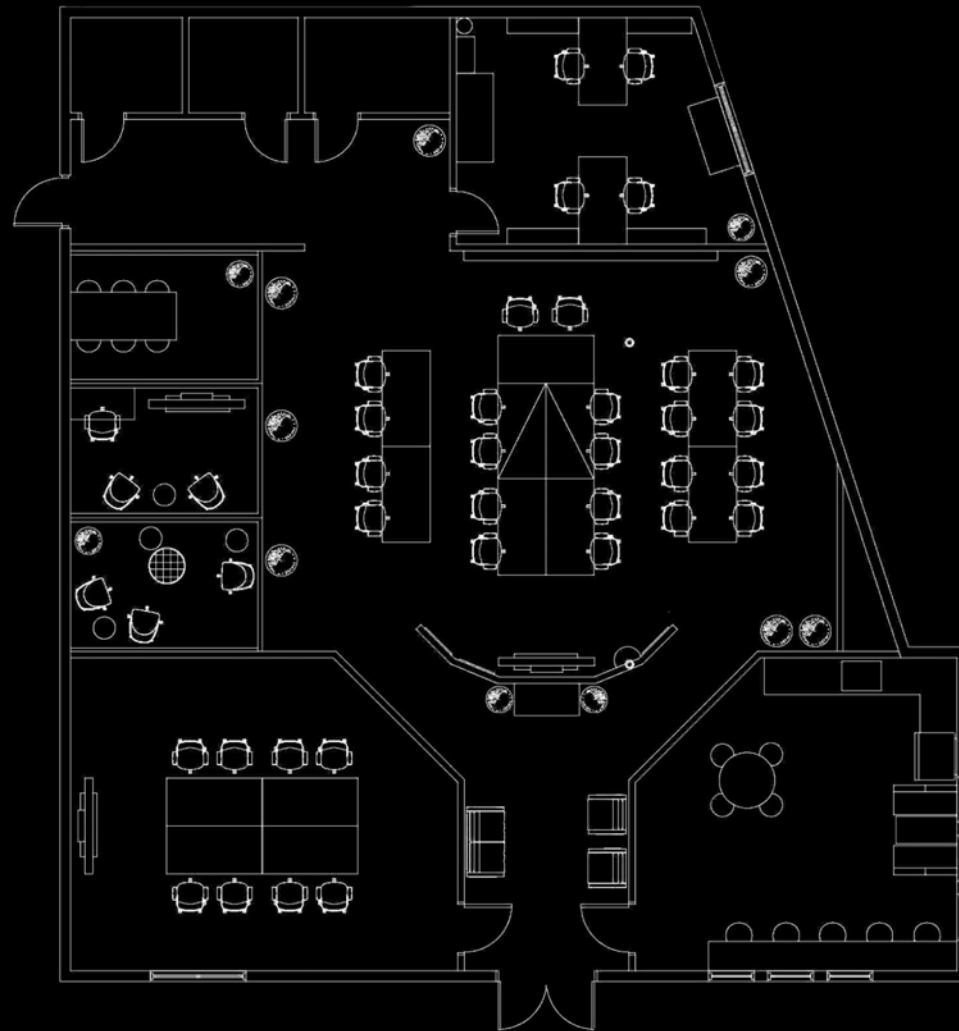


Entrance Sketch

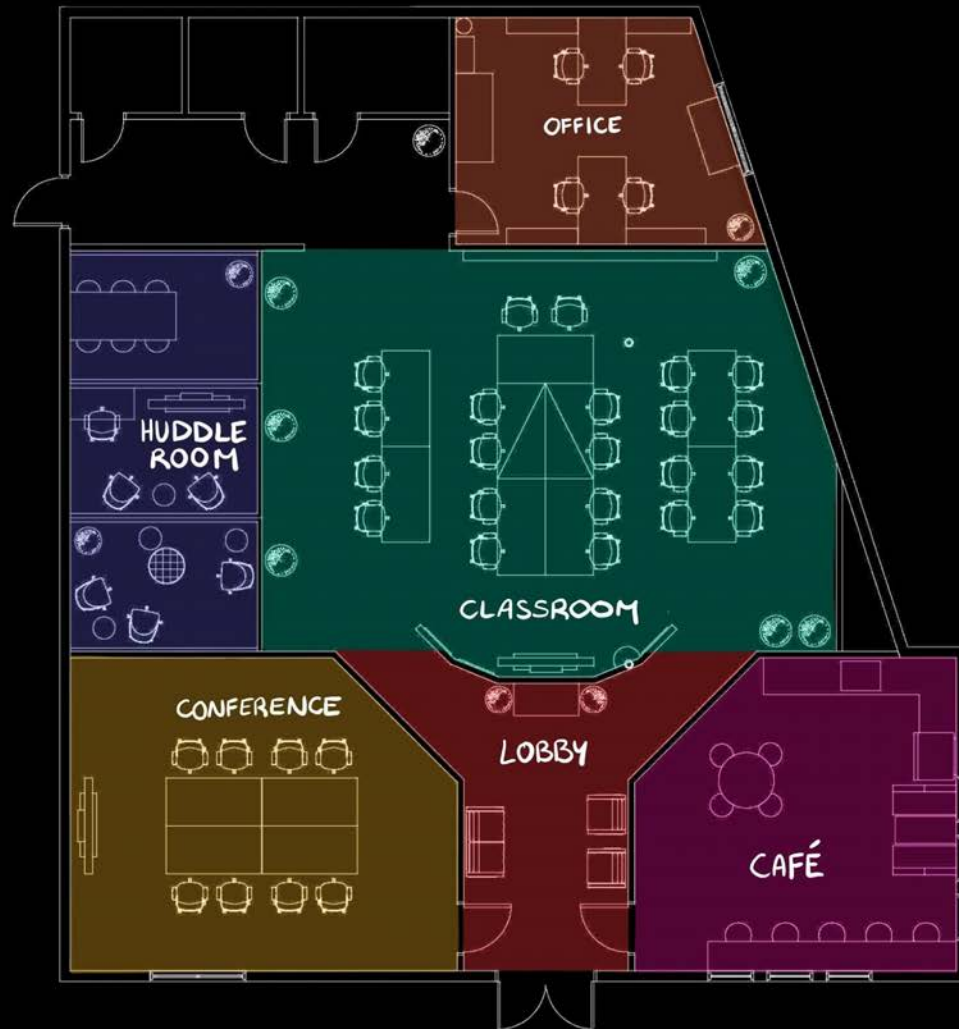


6. Final Layout

AutoCAD Floor Plan



AutoCAD Floor Plan



7. Design Style Guide

Style Guide

Color



- Color used to frame and accent huddle spaces
- Space for eyes to rest
- Colors Layer Easily
- Used to differentiate purpose of a space
- Focus and focal points within space

Style Guide

Walls and Partitions



- Functional pegboard built into partitions
- Huddle spaces have both whiteboard and pegboard walls
- Glass with grilles divides space while keeping an open feel
- Large panes are vertical

Style Guide

Floors



- Sealed concrete for easy maintenance and to reflect light in smaller spaces
- Wood floor accent to create implied hallway spaces

Style Guide

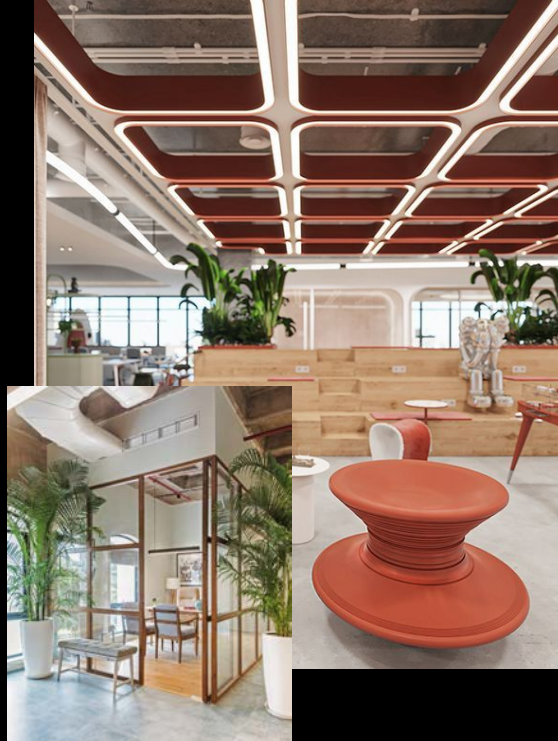
Ceiling and Lighting



- Lobby ceiling (left-hand image)
- Ceiling panels for acoustics with integrated lighting
- Ceiling panels would also mix task lighting with general lighting as two different fixtures on the same ceiling panel

Style Guide

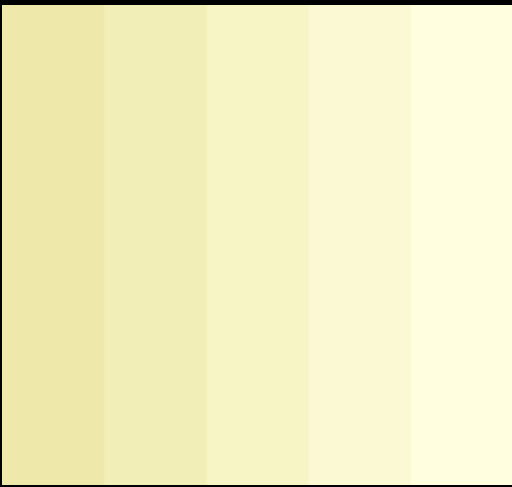
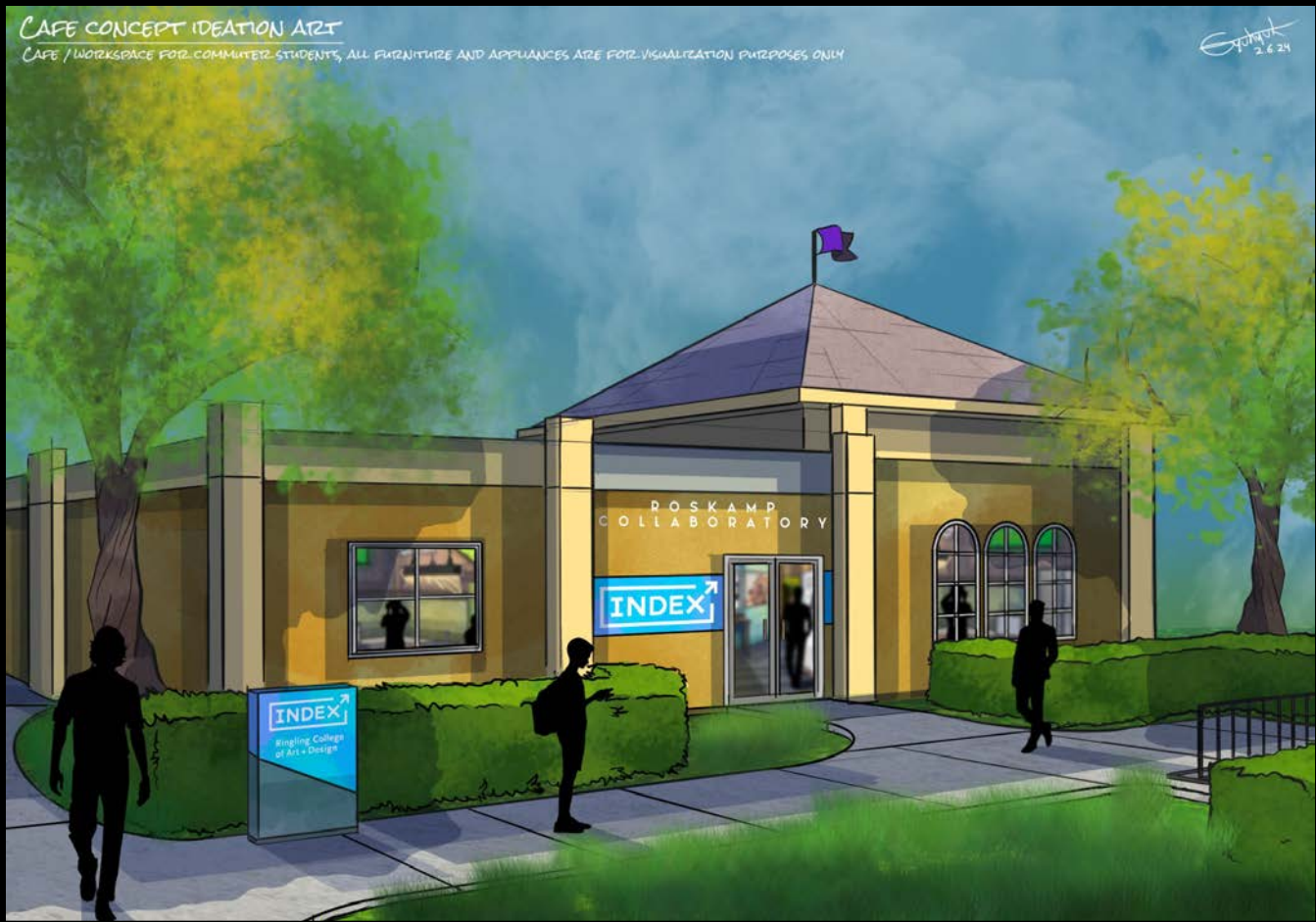
Furniture and Greenery



- Furniture is visually light, moveable with a pop of color
- Plants are used to frame action spaces, don't occupy much visual space
- Potential for casual furniture to be used selectively to create a more defined conversational area

8. Final Visualization

Exterior Sketch



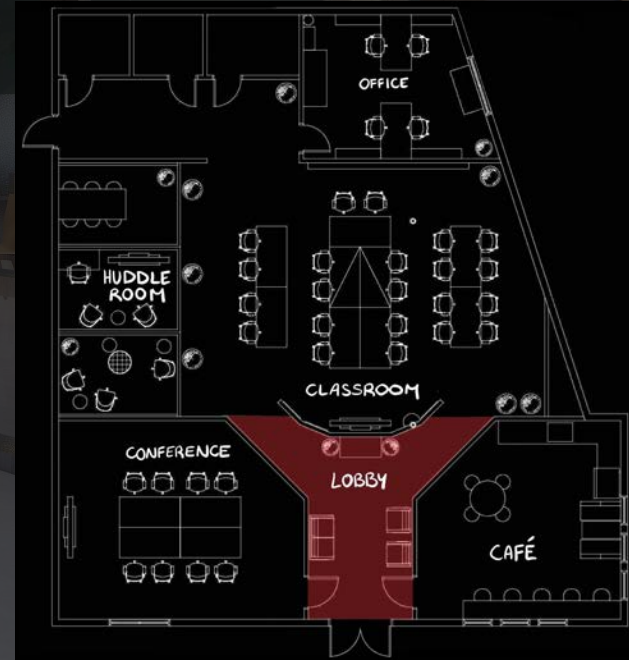
LOBBY





LOBBY

- Graphics
- Central Focus
- Visibility



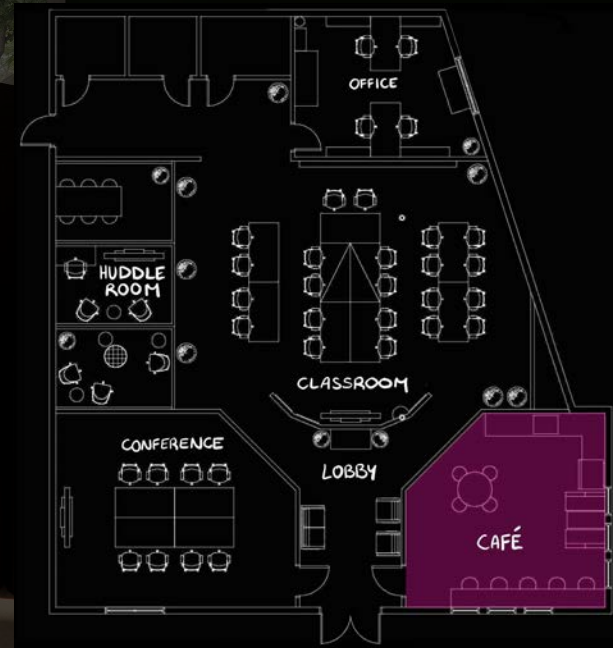
CAFE





CAFE

- Comfort
- Openness
- Natural Materials

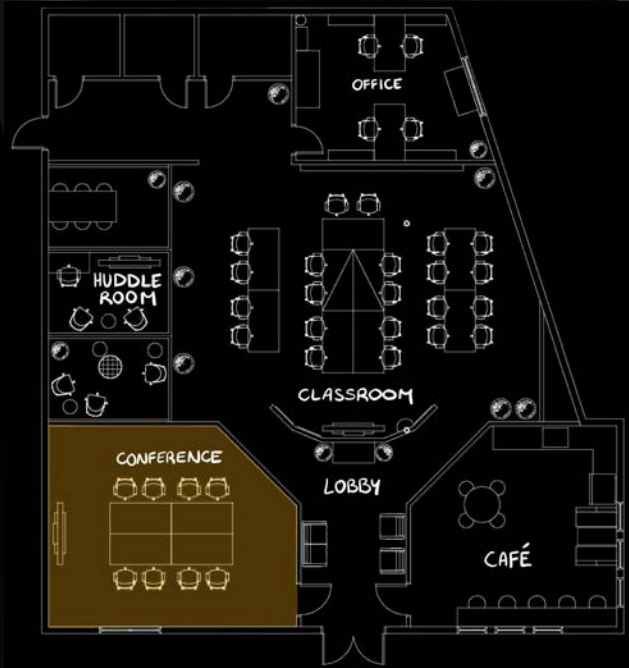


CONFERENCE ROOM



CONFERENCE ROOM

- Color
- Flexible Lighting



CLASSROOM

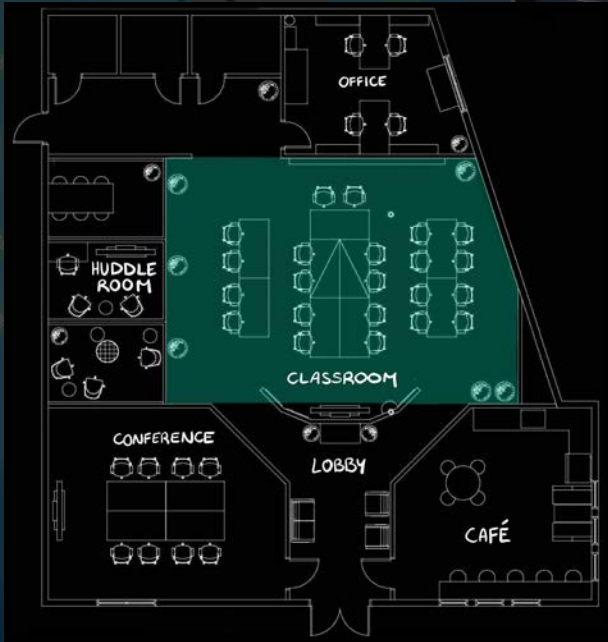






CLASSROOM

- Flexibility
- Acoustics
- Lighting



HUDDLE ROOMS



HUDDLE ROOM



HUDDLE ROOM

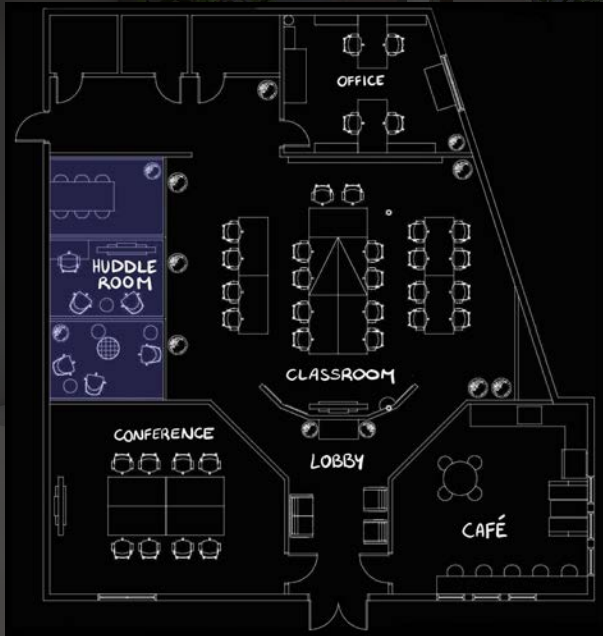


HUDDLE ROOM



HUDDLE ROOMS

- Color
- Tailored
- Comfortable

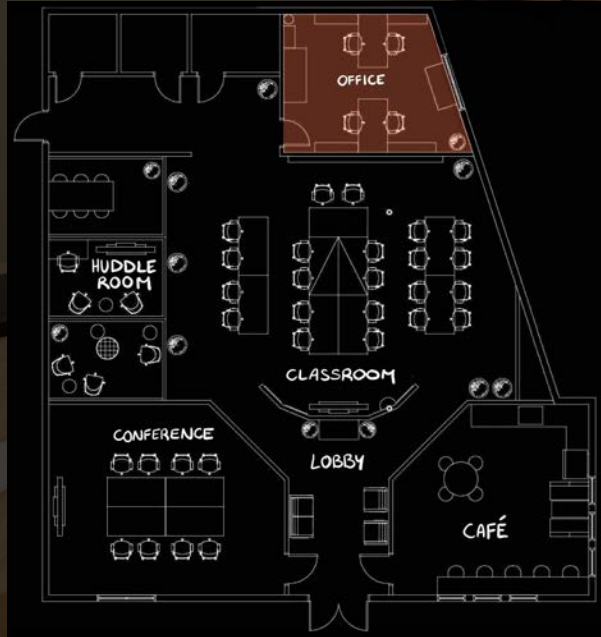


OFFICE



OFFICE

- Natural Materials
- Flexibility





...kassim

Many experiences are abundant and available across campus through experiential learning in the classroom, Design Center, Studio Labs, the Makerspace, volunteerism, internships, and as client-sponsored competitions, customized project experiences, and elective courses.*

INDEX ↗