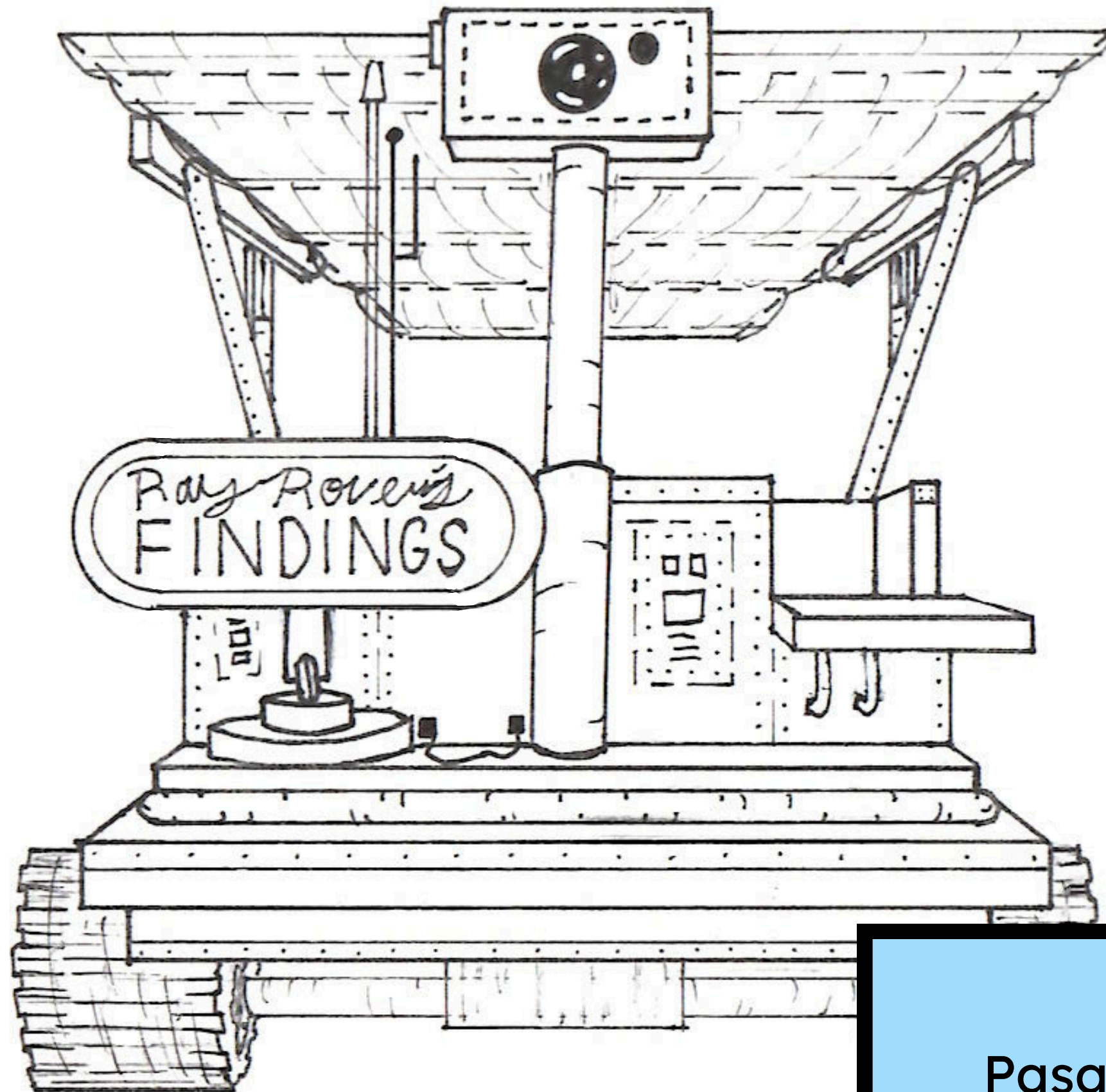


**The Ringling College
Theme Park Design
Competition
Challenge: Themed Cart**

Ray Rover's
FINDINGS



Stellan Pearson
Pasadena High School (Pasadena, California)
11th Grade

Concept Treatment for the Cart

Get a taste of alien planets from your collector-explorer friend: Ray Rover. Stationed before you, he's ready to share his tasty findings with you from his many journeys in outer space!

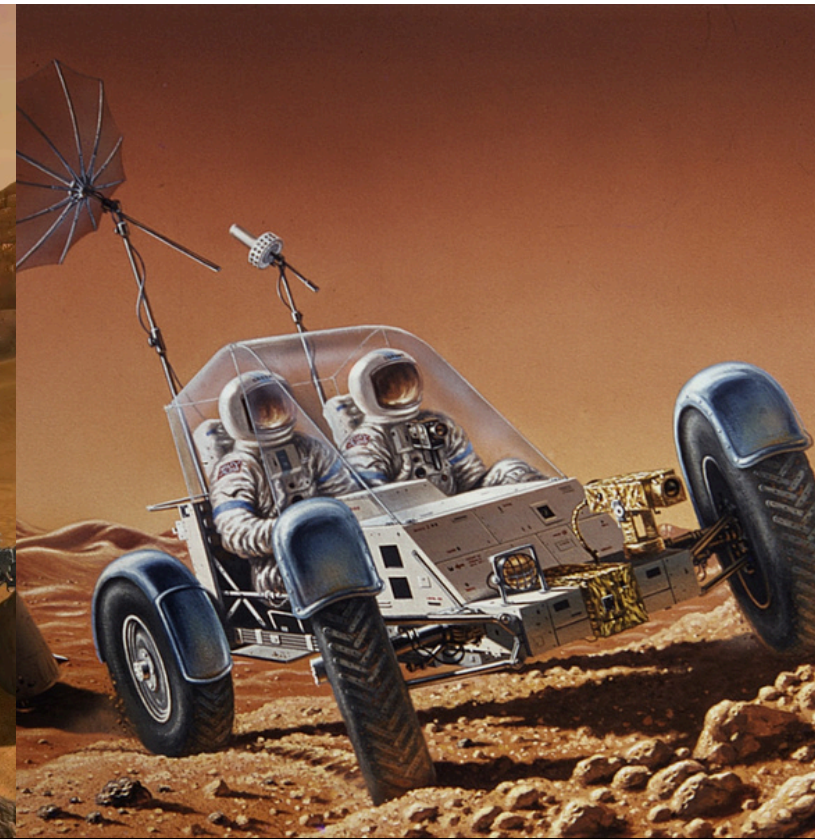
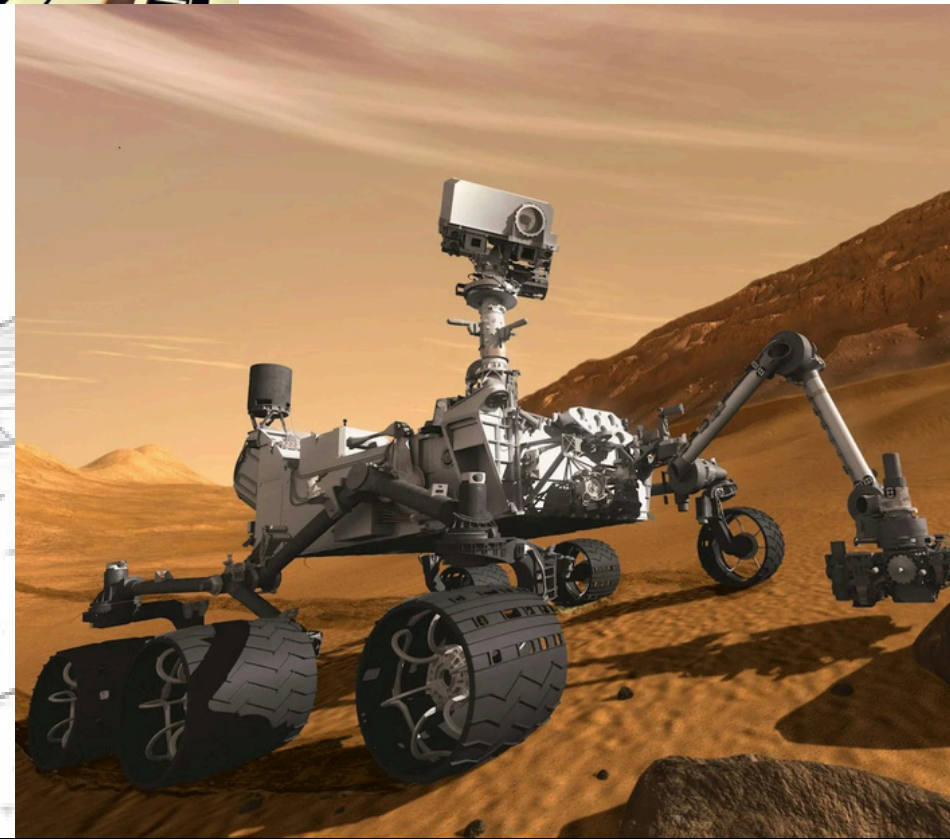
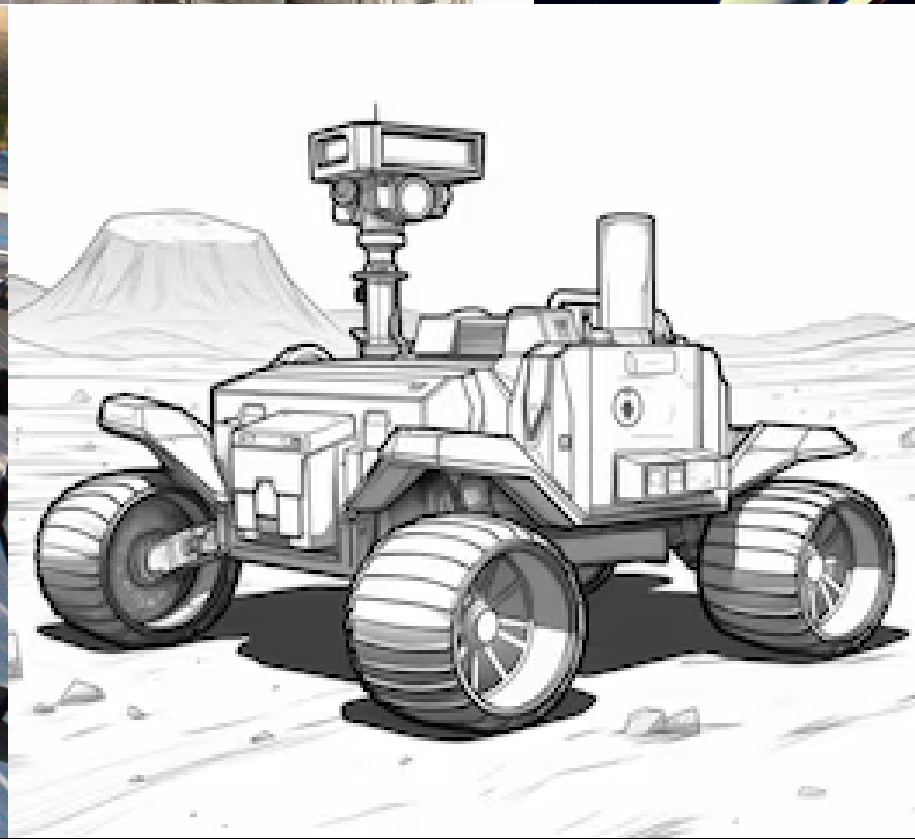
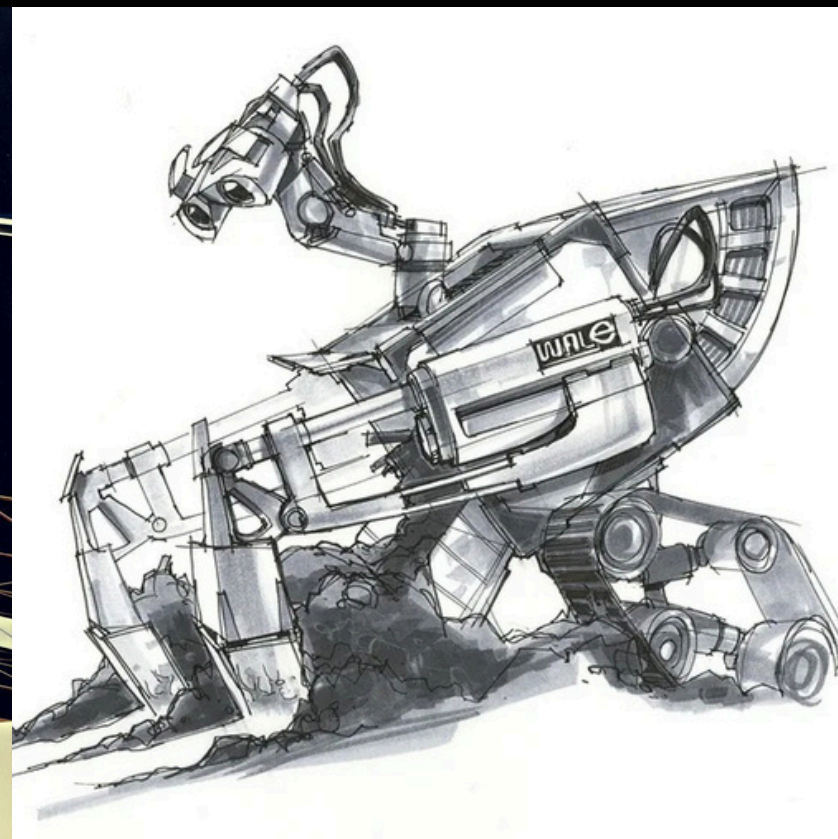
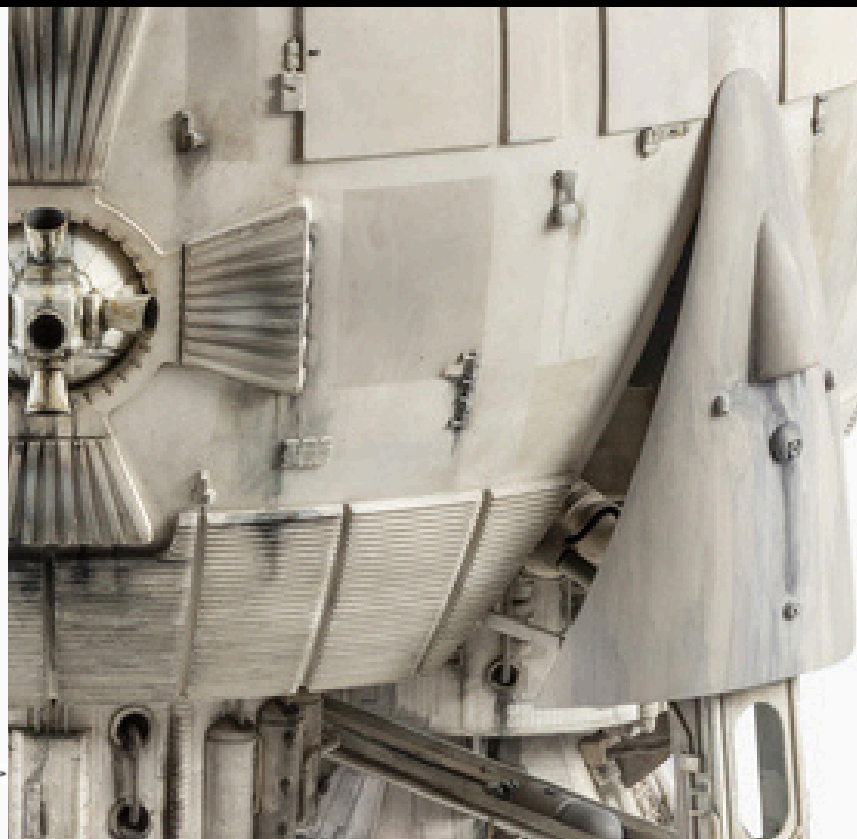
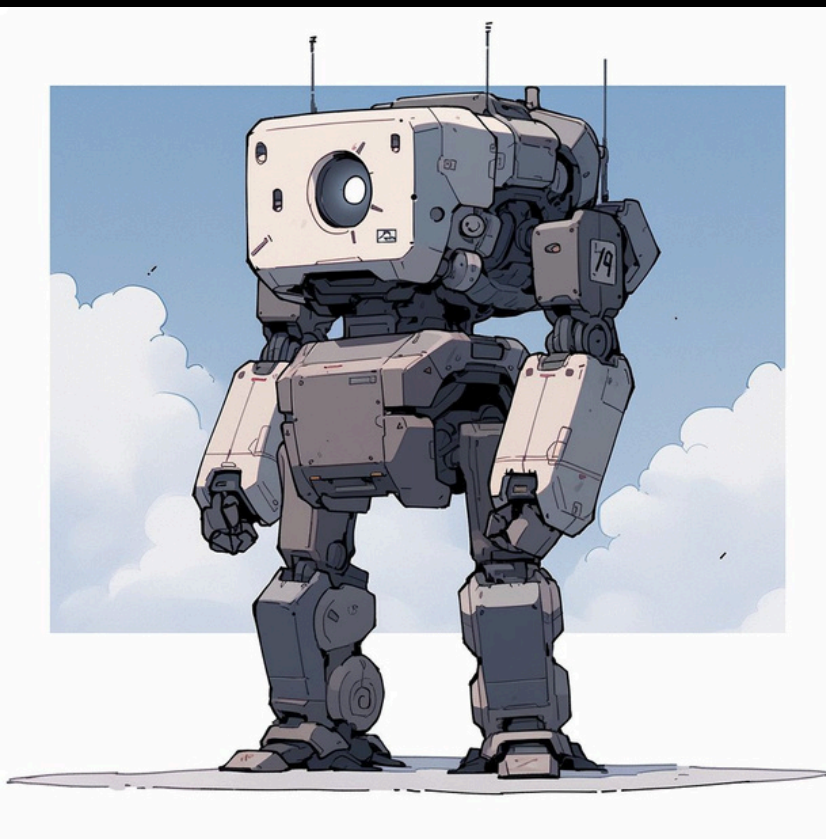
Ray Rover recently returned from a research trip across the galaxy, bringing with him plenty of tasty mineral samples. Ray is inviting you to experience seemingly strange things in order to expand your mind - ultimately allowing you to embrace the differences of other regions. While this peculiar dessert may appear bizarre, Ray is sure you will enjoy it if you simply give it a try.

Concept Treatment for the Cart

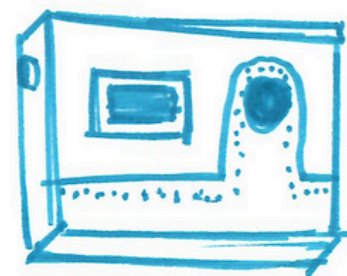
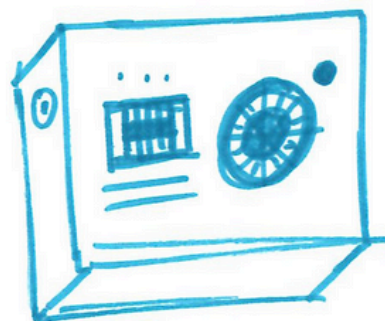
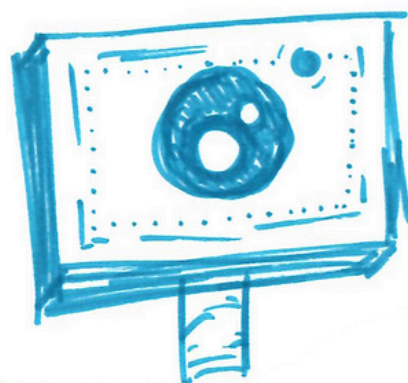
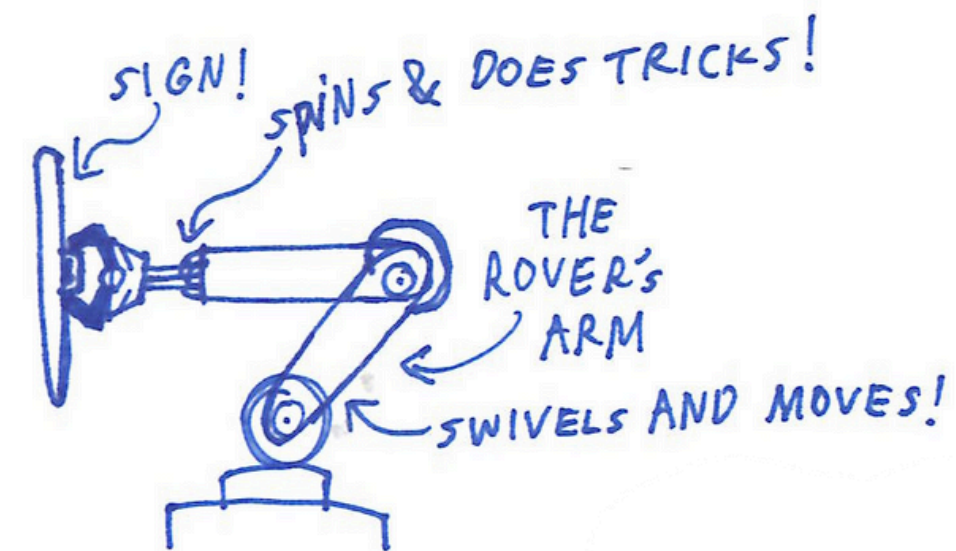
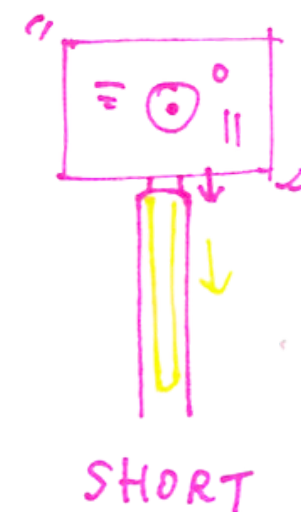
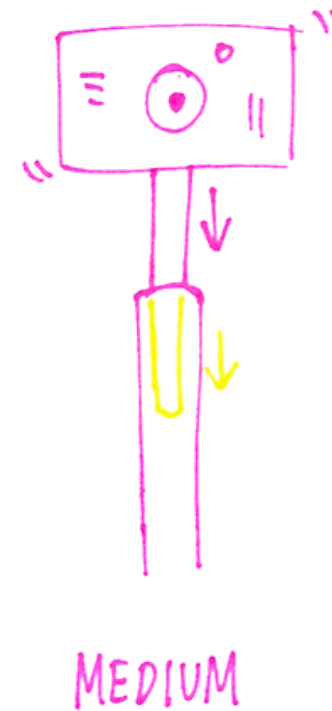
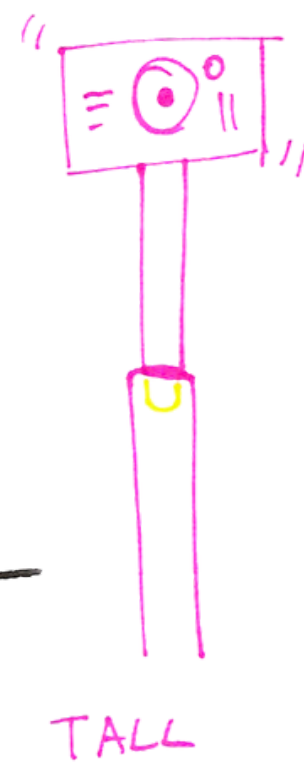
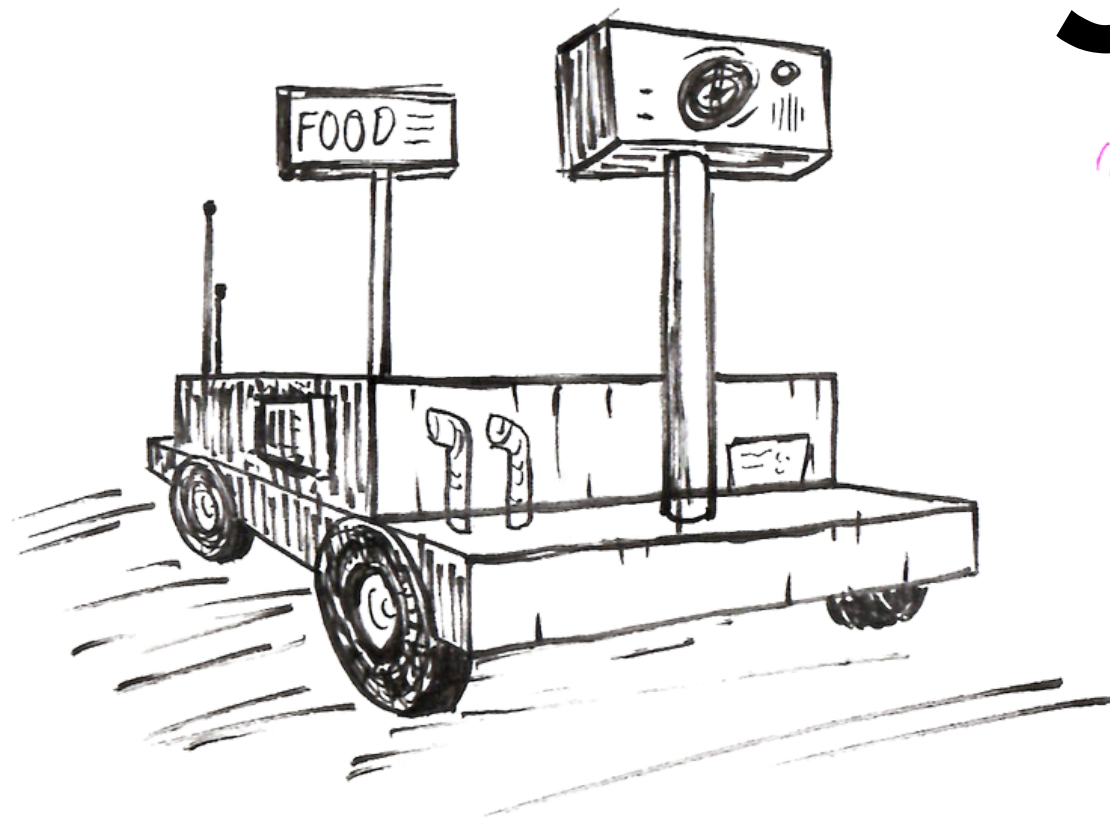
Ray Rover is accessible from all angles, and features a collapsible staff staircase aboard his west side. Inside the cart, there is a sink for sanitation, cabinets for storage, a prep counter, and canisters for the dessert in question: rock-like freeze-dried ice cream bites garnished with toppings. The freeze dried ice cream, shaped like minerals and themed as various non-earthly, edible foods, is stored in circular, air-tight counter canisters. The cart is covered by a translucent, weatherproof awning. A menu and ordering counter are located on Ray's east side; customers also pick up their order here. A twirling, trick-doing robot arm spins the cart's "Ray Rover's Findings" sign to attract attention. Ray's head is interactive and expressive, socializing with guests through emotive expressions and sound effects.

Grabbing an intergalactic bite at Ray Rover's Findings is an excellent way to appreciate something different in life. Ray, having traveled the galaxy, has seen alienation and closed-mindedness result in a lack of curiosity on other planets. Instead, our robot friend is encouraging us to not judge a book by its cover, and gain a new outlook via a tasty treat!

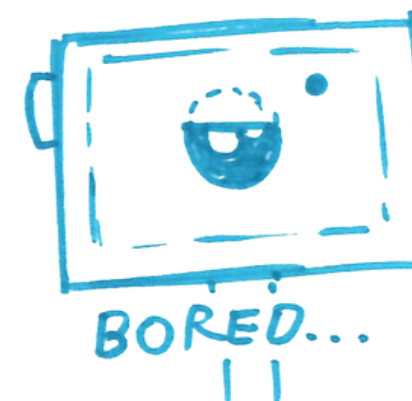
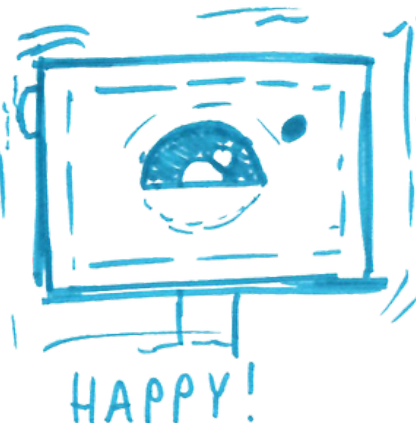
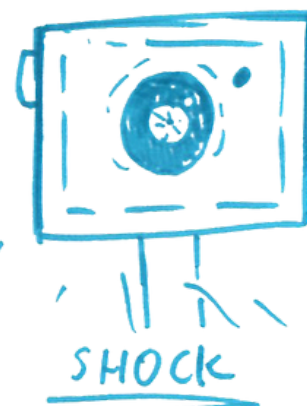
Inspiration



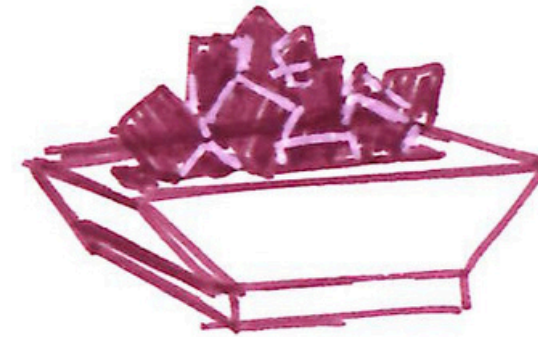
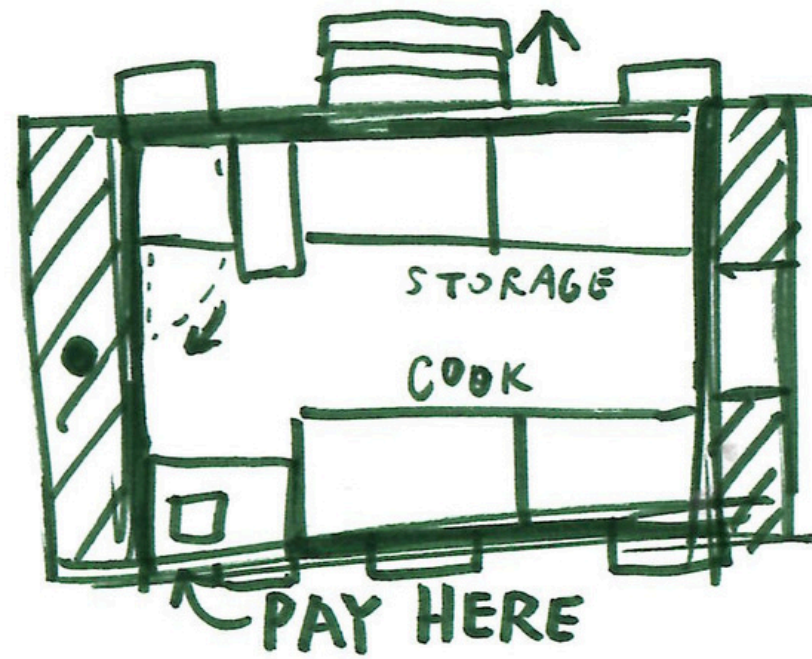
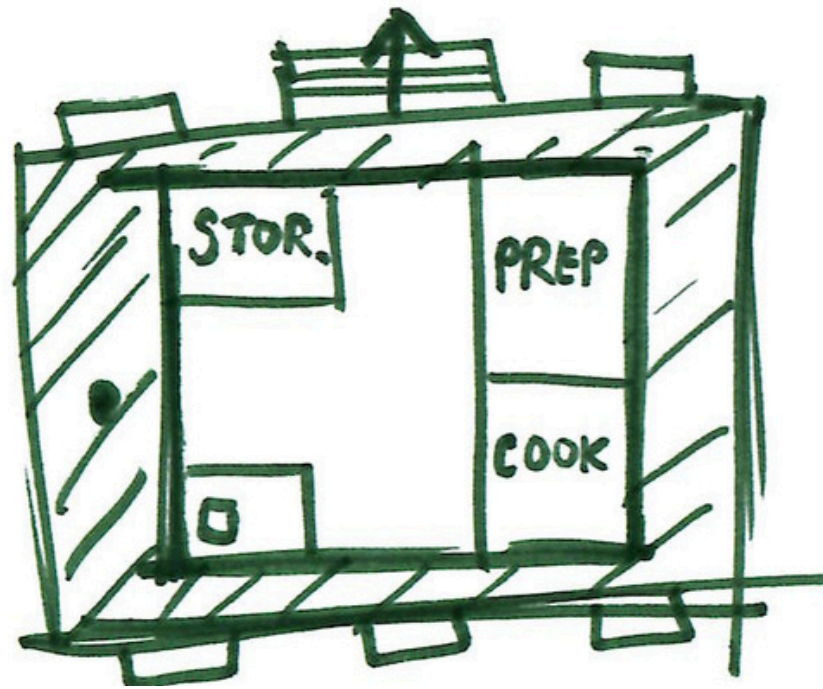
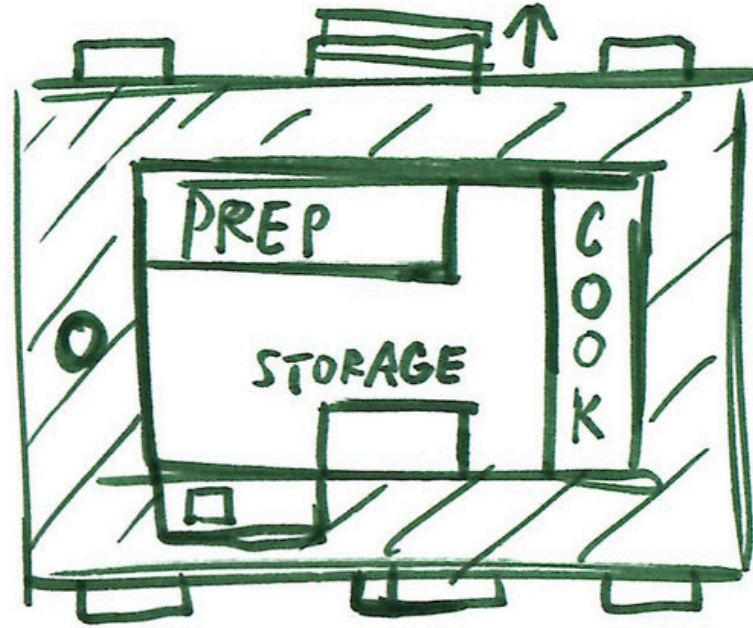
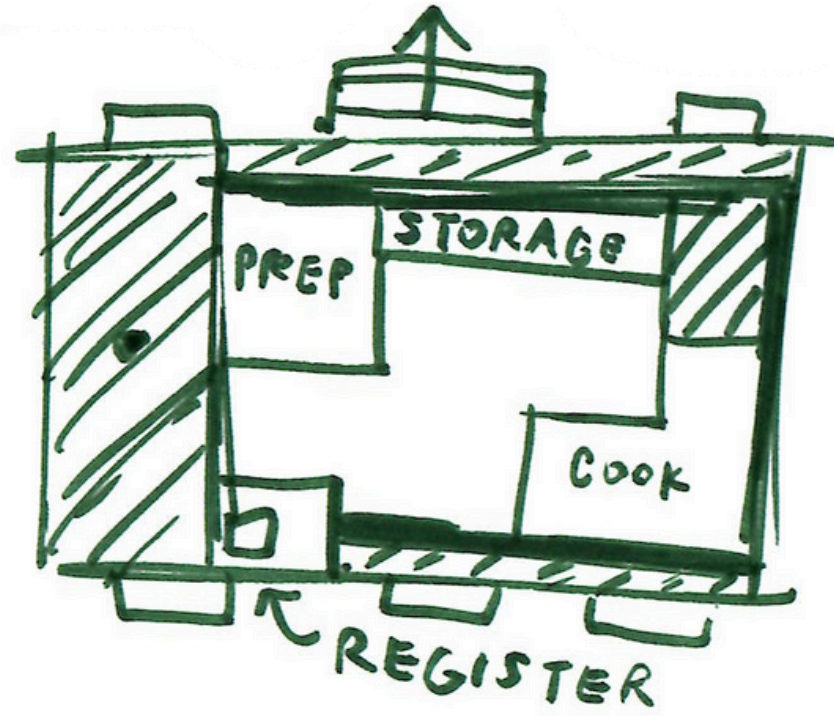
Sketches



IF MAD, HIS HEAD SMOKES



Sketches

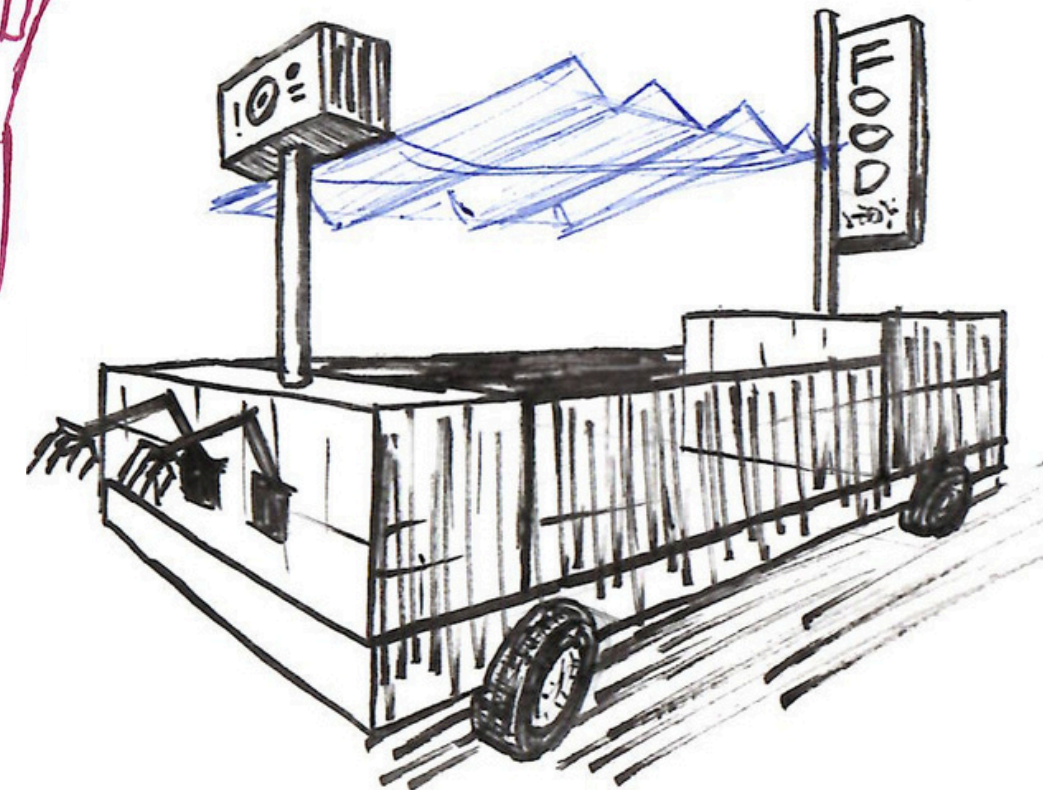
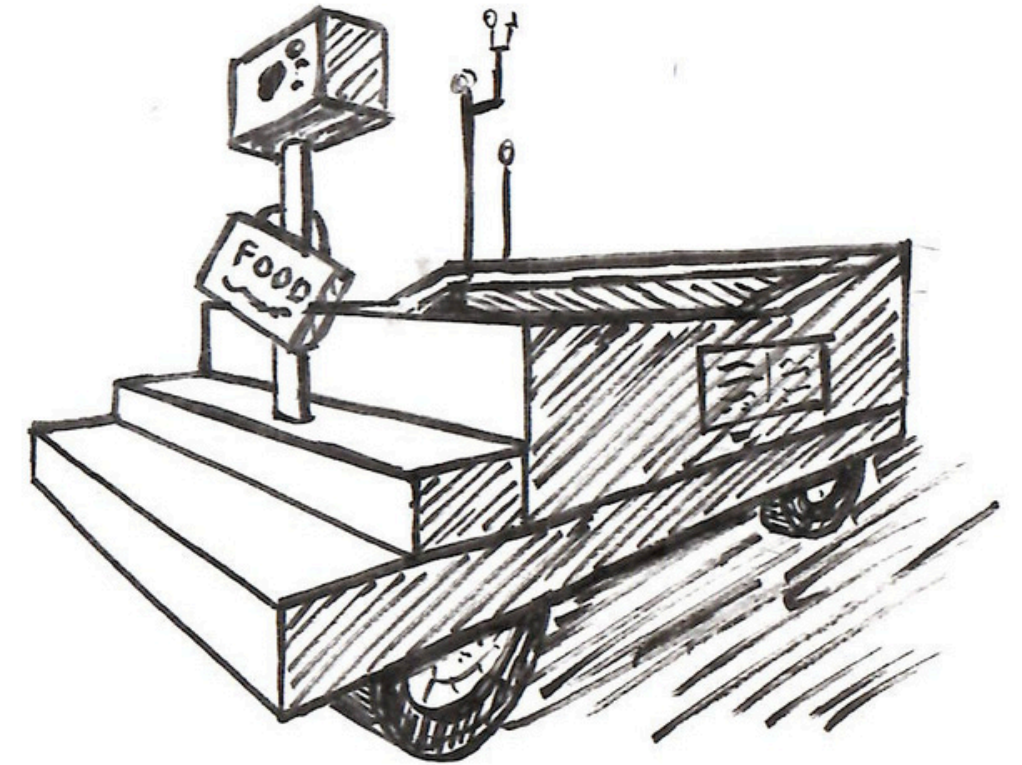


TRAY

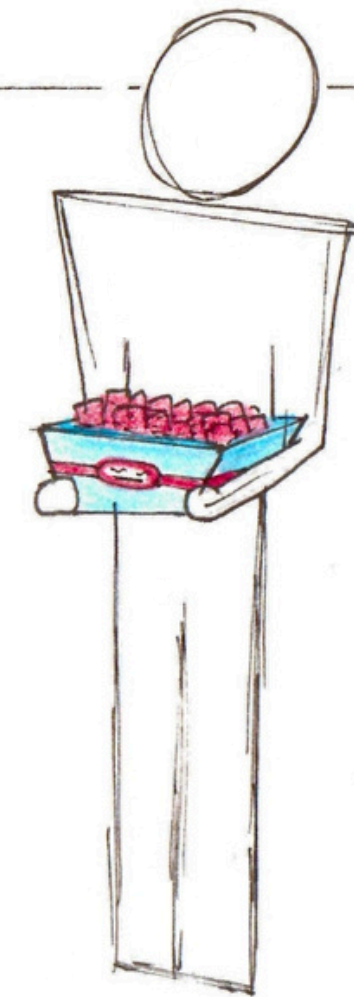
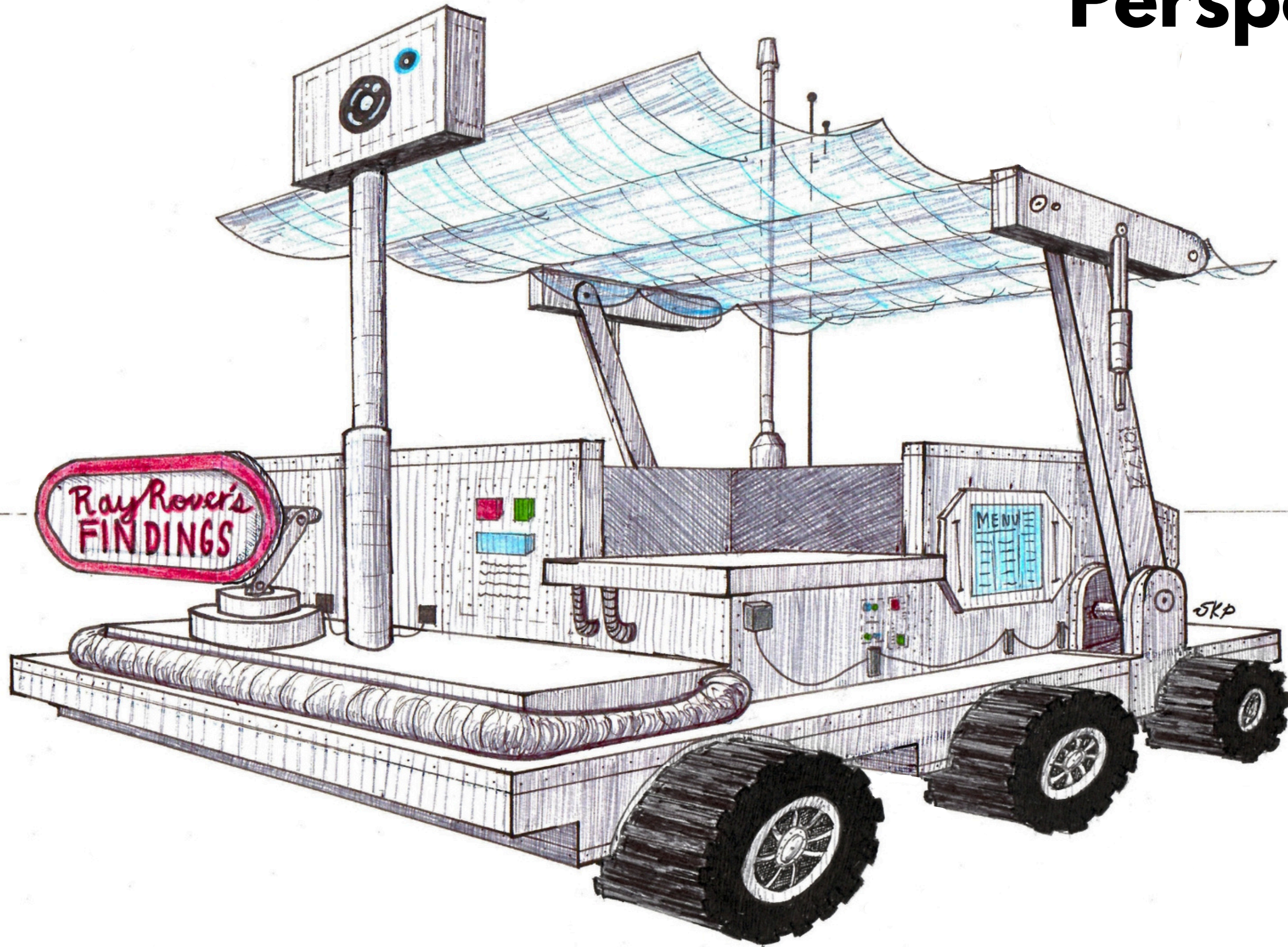
KABOB-STYLE



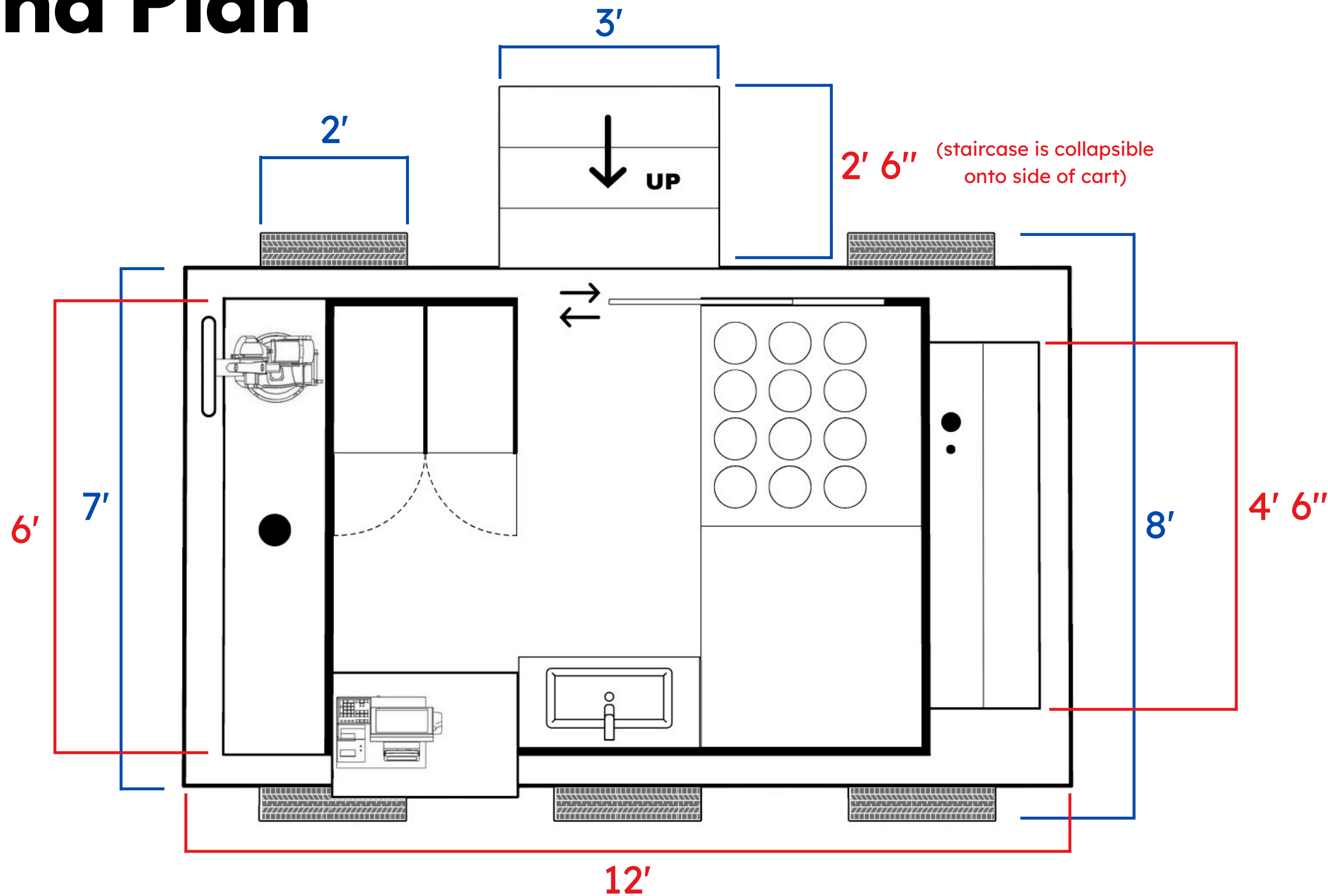
CONE



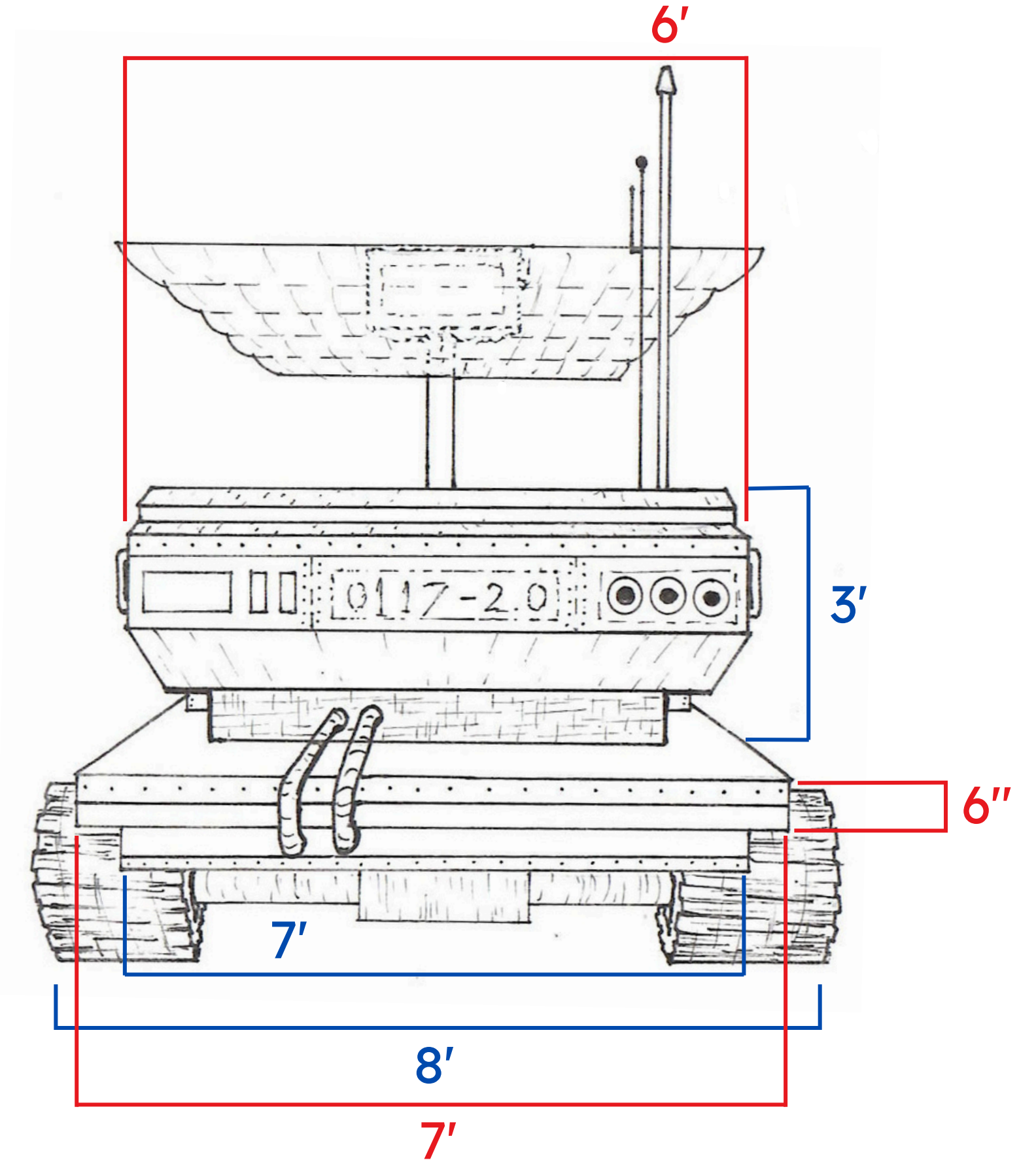
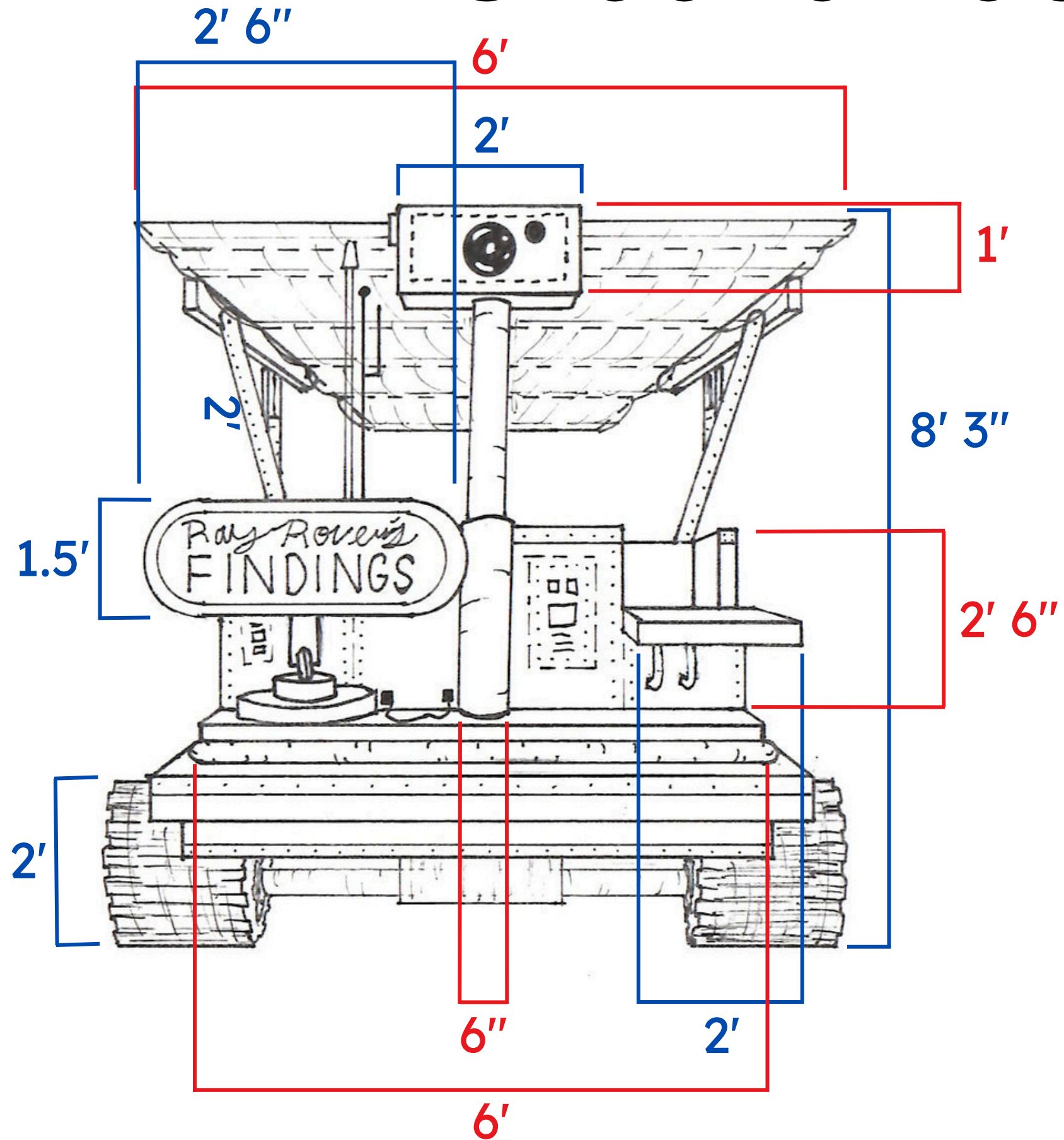
Perspective Drawing



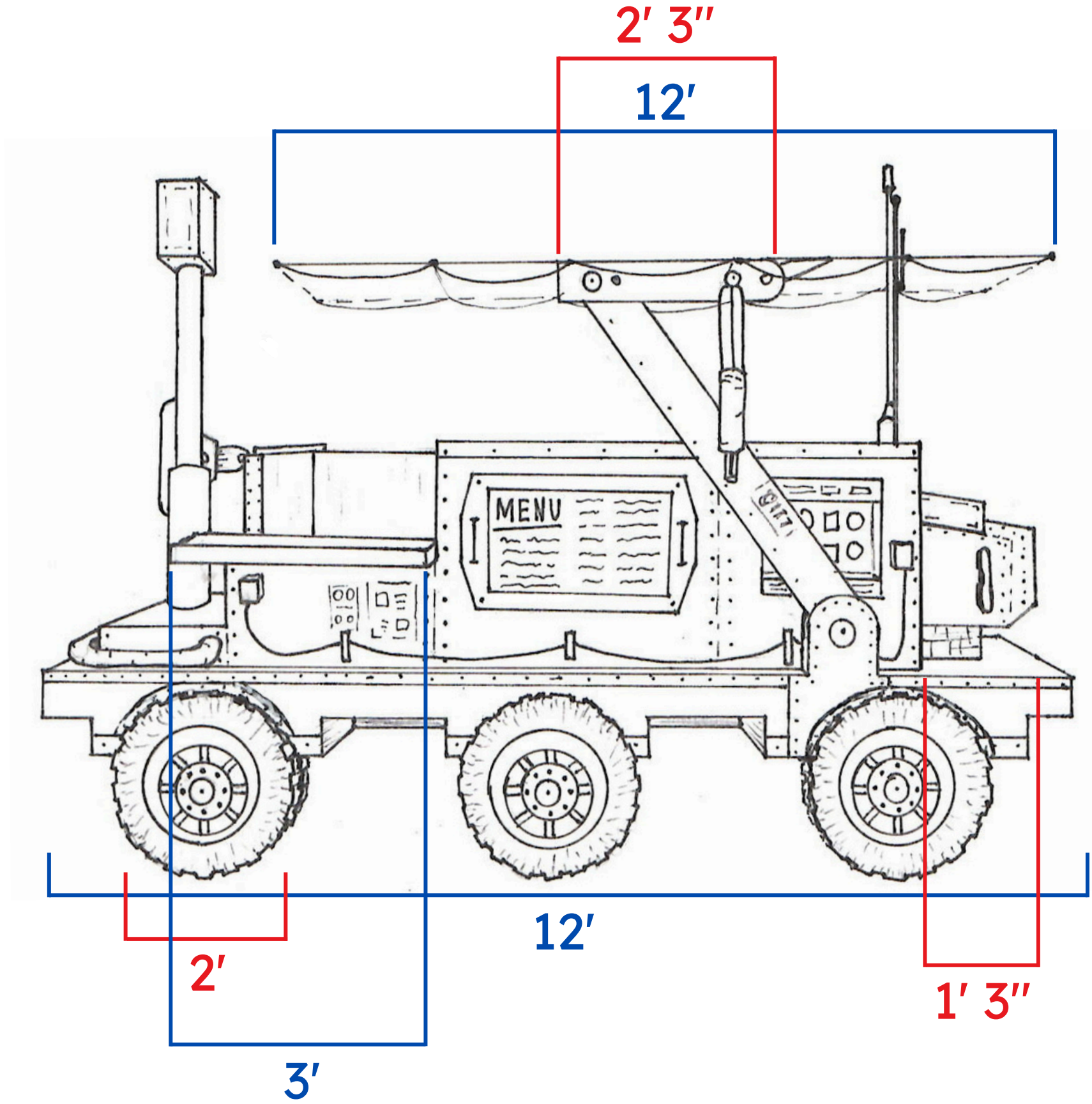
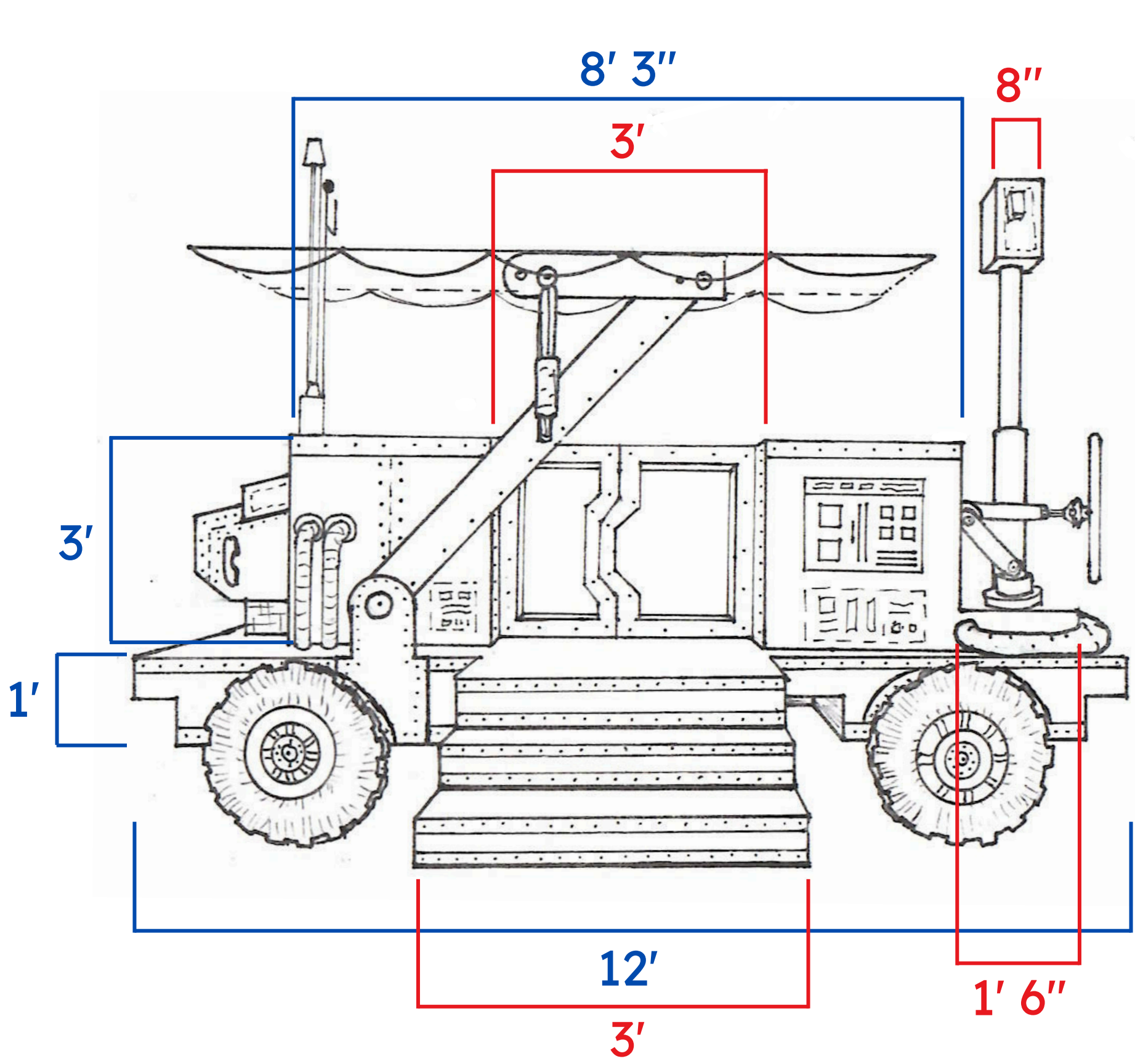
Ground Plan

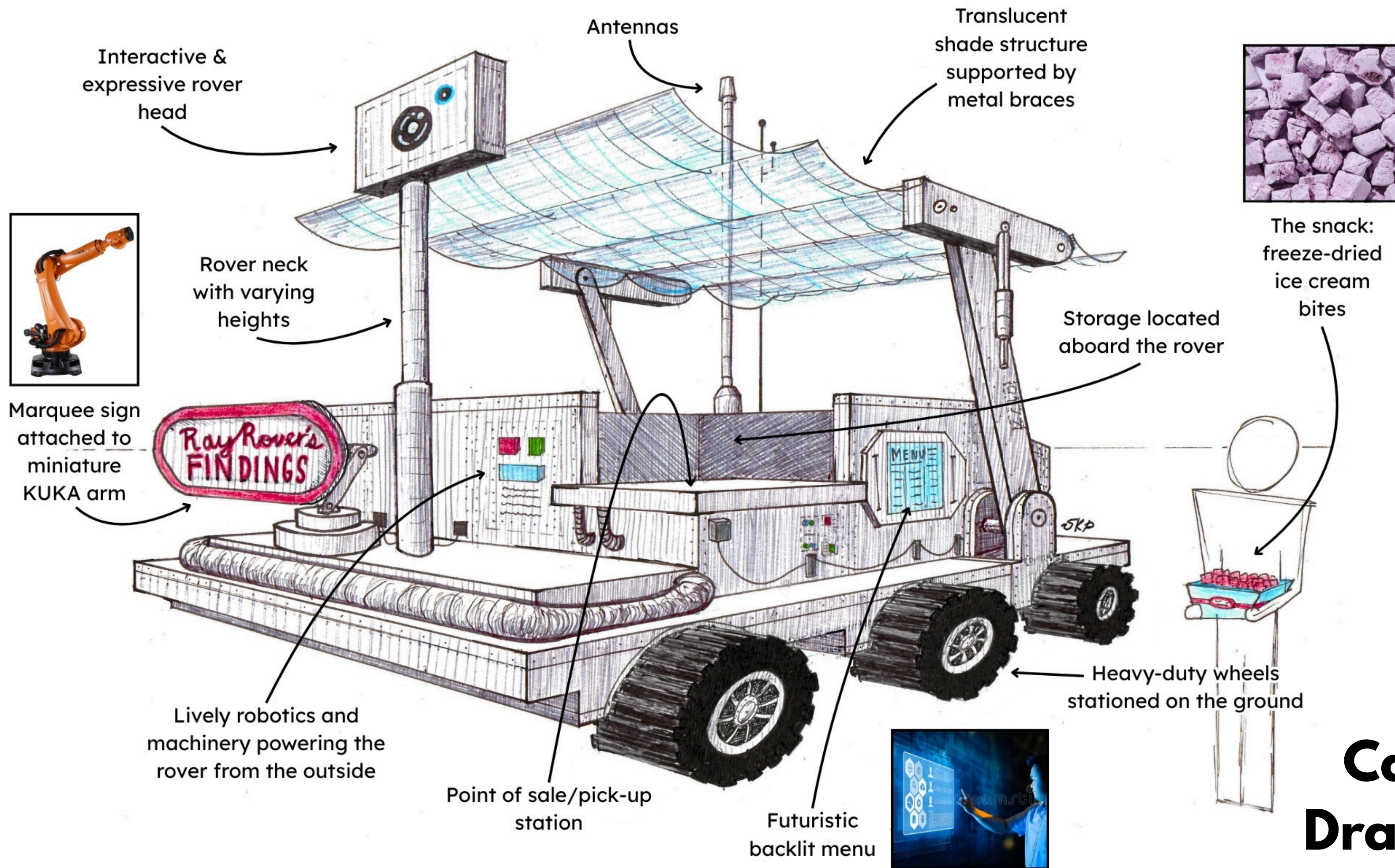


Front and Back Elevations



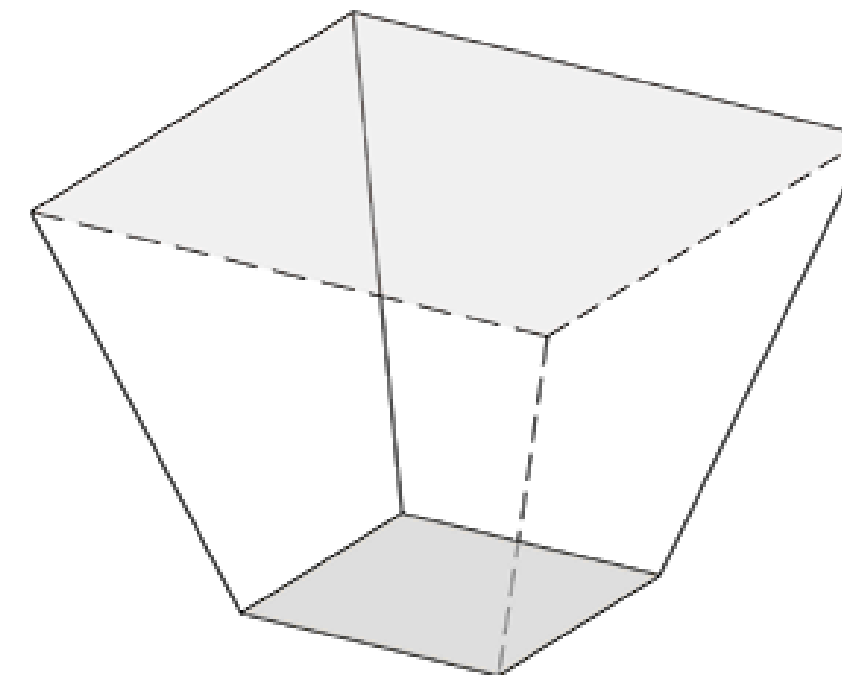
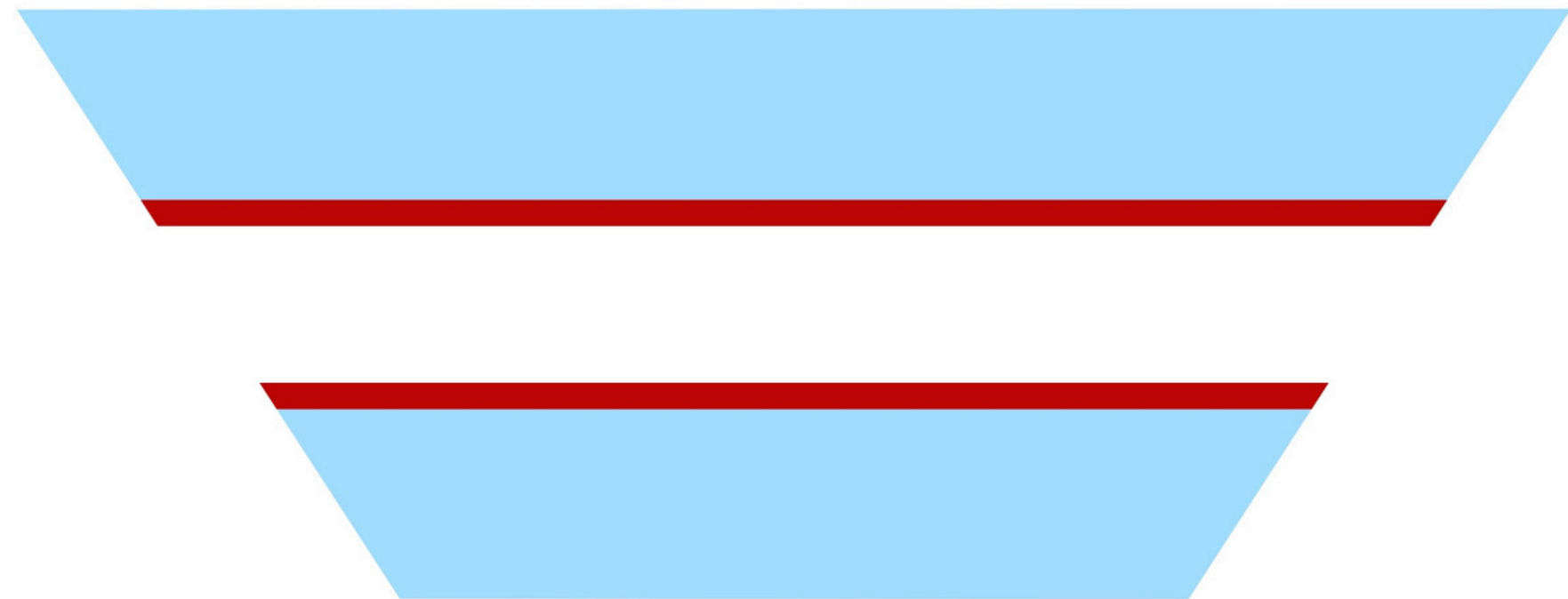
Side Elevations





**Callout
Drawing**

BONUS: Dessert Packaging



The freeze-dried ice cream bites are complete with a variety of specialty toppings and served in trapezoid-pyramid style trays!